

THE SOCIALIST PARTY

MONTHLY BULLETIN

NATIONAL HEADQUARTERS, 111 NORTH MARKET STREET, CHICAGO

Volume VIII

JULY, 1912

Number 10

We Want \$500,000 That's Half a Million!

WHAT FOR?



To print twenty-five million 16-page pamphlets and distribute them free to every voter in the nation.

To put a dozen men in Congress.

To put Socialist Representatives in twenty state legislatures.

To poll 2,000,000 votes and paint the nation "red all over."

The National Campaign Committee has undertaken to raise this amount. It is a large undertaking but it can be done. The party raised nearly \$100,000 in 1908 with only one-third of our present membership and without the spur and enthusiasm of the great opportunity now before us. *It can be done, and it will be done.* Not only will we raise this half million dollar campaign fund, but we are going to raise the bulk of it in a single day through contributions to the

1.00	1.00	1.00	1.00
50	One-Day Wage Fund		50
50	Socialist Campaign		50
25	FOR PRESIDENT		25
25	FOR VICE-PRESIDENT		25
25			25
25	EUGENE V. DEBS	EMIL SEIDEL	25
25	The Bearer		25
10	is authorized to collect funds for the National Socialist Campaign Committee.		10
10	As a perfectly just and democratic plan we are asking comrades to contribute one day's wage on July 20th, but contributions of any amount will be accepted.		10
5	This card is void and the authority of the collector cancelled after July 20th.		5
5	One-Day Wage Fund		5
5	National Socialist Campaign Committee		5
5	J. Mahlon Barnes, Campaign Manager		5
5	PIN PUNCH FIGURES FOR AMOUNT GIVEN		5

ONE-DAY WAGE FUND TO BE COLLECTED JULY 20TH

We need the active work and support of every party member and you have been appointed a member of the National Socialist Finance Committee to assist in raising the funds to finance the greatest campaign ever undertaken by the Socialist Party.

Your local secretary has a card for you like the one shown above. If he has not given it to you, call on him for it. The card calls for ten dollars in contributions. Get busy. Give one day's wages yourself and give every friend and sympathizer, shopmate and neighbor a chance to get in, until you have punched out every figure in the margin.

It is up to the rank and file—up to YOU. Will you rally to this call and help us raise the fund to "PAINT THIS NATION RED ALL OVER?"

ANSWER WITH THE HALF A MILLION

NATIONAL SOCIALIST CAMPAIGN COMMITTEE

Minutes of the National Executive Committee of the Socialist Party and of Joint Session with Campaign Committee, Held at Chicago, June, 1912

Meeting of the National Executive Committee called to order at 10 a. m., June 15, 1912, at National Headquarters, 111 N. Market street, Chicago, by National Secretary John M. Work. There were present the following members: Wm. D. Haywood, Morris Hillquit, Kate Richards O'Hare, John Spargo.

Hillquit was elected chairman. Gail McDermut was elected secretary.

Moved that the National Secretary endeavor to secure a better place of meeting for the afternoon session. Carried.

Finances.

The National Secretary reported the balance on hand, \$746.72, and liabilities as follows:

Chas. H. Kerr & Co., literature	207.56
H. G. Adair, printing	559.25
A. B. Dick & Co., mimeograph supplies	113.48
M. Fry & Co., supplies	32.75
The MacMillan Co., literature	.48
B. W. Huebsch & Co., literature	1.12
James H. O'Neil, gold plate buttons and pins	141.75
Frank J. Kain & Son, printing	433.40
P. F. Pettibone & Co., supplies	3.95
Saul Bros., printing dues stamps	41.25
John F. Jordon, literature	17.50
Joshua Wanhope, red flag pins	30.00
Horder's Stationery Stores	6.80
Underwood Typewriter Co.	87.75
A. H. Andrews Co., office furniture	71.50
Milwaukee Social Dem. Pub. Co., literature	19.00
Equity Series, literature	1.35
Library Bureau, office furniture	88.20
The Elliott Co., mailing list supplies	2.40
United States Express Co.	416.53
Consumers' Box Mfg. Co.	7.20
Eagle Stamp Works, rubber stamp outfits	26.01
G. B. Williams Co., printing	4.55
Pilcher-Hamilton Co., paper	78.10
Geo. H. Doran Co., literature	2.19
J. W. Butler Paper Co.	130.59
F. S. Webster Co., supplies	3.15
The Christian Socialist, literature	.36
H. H. Hoffman Printing Co.	46.00
Pearson Publishing Co., literature	1,500.00
J. P. Black & Co., printing	6.25
Lucke Badge & Button Co., celluloid buttons	146.15
K. I. Herman Co., shipping boxes	9.30
W. E. McDermut, bal. reporting convention	495.37
National Lettish Organization, balance appropriation	100.00
Local Oklahoma City, appropriation	350.00
Chicago Daily Socialist, balance appropriation	900.00
The Progressive Woman, balance appropriation	100.00
Committee on Commission Government, balance appropriation	11.65
Printing of 600,000 leaflets ordered	309.00
Printing of ballots for Referendum B, 1912	630.00
Total	\$7,131.79

The National Secretary called attention to the fact that the national convention had provided that the books of the National Office should be audited on the first of July and the first of January of each year, the company making the audit to be selected by the Executive Committee.

Moved that a sub-committee be appointed of members of the National Executive Committee to select an auditing company and report to the National Executive Committee. Carried.

O'Hare and Spargo elected as the sub-committee.

The National Secretary reported that he had obtained the club room at the Briggs House for the afternoon session of the Executive Committee.

A telegram from Alexander Irvine, regretting that illness prevented his attendance at the meeting, was read.

Literature.

The National Secretary reported as follows:

We are now publishing 600,000 additional four-page leaflets, namely:	
50,000 To the Working Woman, by Theresa Malkiel.	
50,000 Why You Should Be A Socialist, by Theresa Malkiel.	
50,000 To The Union Man's Wife, by Theresa Malkiel.	
50,000 The Teacher and Socialism, by Caroline A. Lowe.	
100,000 To Wives of Toilers, by Meta L. Stern.	
100,000 Votes for Working Women, by Meta L. Stern.	
100,000 The Boy Scout Movement, by Mary O'Reilly.	
100,000 A Catholic Defense of Socialism.	
To the Union Man's Wife, and Votes for Working Women, are new. The others are reprints.	
From March 1 to June 1, the following literature was disposed of:	
440 Clth bound books.	
460,029 Copies of The Growing Grocery Bill.	
12,152 Copies of other paper bound books.	
117,699 National Platforms.	
835,246 Leaflets.	
The total amount of money received for literature during these three months was \$4,264.78, as against	

\$1,383.65 during the same period in 1911.

The above does not include literature sold through the Lyceum Department.

Spargo as chairman of the Editing Committee reported on manuscripts previously submitted, as follows:

"What Is This Socialism, Anyway?", by W. E. P. French, should be declined, as not suitable for leaflet publication.

Moved that it be declined. Carried.

"A Demon's Scheme," by George Phelps, is suitable for publication in Socialist papers, but not suitable for publication by the National Office.

Moved that it be declined. Carried.

"If There Were a Social-Democratic Government, How Should It Begin?" by Alfred Russel Wallace, recommended that it be declined as unsuited to our purposes.

Moved that it be declined. Carried.

"The Strike And You," a leaflet by Edward Perkins Clarke, recommended to be printed with the suggestion that the name of the Socialist party be inserted in certain places.

Moved that the leaflet be published as amended. Carried.

"The Digger in the Earth," by Clyde J. Wright. Recommended that it be published.

Moved that the National Office publish it in leaflet form. Carried.

"Extract from a New England paper. Interview with Edmund T. Dana." Recommended that it be declined.

Moved that it be declined. Carried.

"What Is Socialism?" by John R. McMahon, from the New York Tribune. The committee asked permission to report on this later.

"Labor, Awake!" by Robert Hunter. Action deferred.

The National Secretary stated that he had a manuscript of a book entitled "The Farmer," by Clyde J. Wright.

Moved that it be referred to the Editing Committee. Carried.

Communication from J. F. Whitson, M. D., Uniontown, Pa., requesting that the National Office handle and list a pamphlet published by him, for negroes.

The pamphlet was referred to the Editing Committee.

Letter from H. G. Adair, printer, stating that he had on hand approximately 8,000 copies of "The Road to Power" by Kautsky, and offering the entire lot to the Party at 3 1/2 cents apiece or half the lot for 4 cents apiece.

Moved that the National Secretary be empowered to purchase the books at a cost not to exceed \$200.00. Carried.

The National Secretary reported that two books had been submitted to him: "A Guilty World," by Erik Christenson, and "Resolved, That We Disfranchise the Men and Give Women the Ballot," by Esther Edelson, with request that the National Office handle them.

Moved that they be referred to the Editing Committee. Carried.

Organization and Agitation.

The National Secretary reported that organizers were assigned as follows:

Prudence Stokes Brown to California until the November election.

John C. Chase to Alaska until the August election.

Wm. L. Garver to Missouri from June 20 to August 20.

W. C. Hills to Nevada until September 15.

Lena Morrow Lewis to Alaska until the August election.

I. S. McCrillis to Iowa for the months of July and August.

J. E. Snyder to the South from June 13 to December 13.

Florence Wattles to Indiana until the November election.

Carl Legien, of Germany, began filing his dates under the auspices of the party on May 27, and will continue until July 8.

The National Secretary brought up the subject of granting a State Charter to the State of South Carolina, and reported that they had adopted by referendum a State Constitution and Platform, and elected candidates for public and party offices. He recommends that the charter be granted.

Moved that it be granted. Carried.

Communication from the United Hungarian Socialist Federation of America, asking that the National Executive Committee contribute \$10.00 weekly to the salary of a Hungarian Organizer, the other \$10.00 weekly of his salary, with all expenses, to be borne by the Hungarian Federation. A letter of recommendation from Algonon Lee regarding the organizer mentioned, Elmer Rosenberg, was also read.

Moved that the matter be deferred until such time as the affiliation of the United Hungarian Socialist Federation with the Socialist Party be effected. Carried.

The National Secretary stated that since the meeting of the committee in May, when W. R. Snow had been appointed as organizer in Arizona for two months he had been in communication with State Secretary Bradford, who stated that he found that Comrade Snow would not be able to take up organizing work in Arizona before the first of September, and asked that some other organizer be assigned who could begin work the first of August.

Moved that in view of the inability of Comrade Snow to begin work at the desired time, another organizer be selected. Carried.

A request from the Polish section for assistance, which was referred to

the full committee from the last meeting, was brought up.

Moved that in view of the amendment adopted by the national convention and now pending the referendum of the membership, that there shall not be more than one foreign speaking organization affiliated with the party in the same language, the request be not granted. Carried.

A letter was read from Sigurd Russell, relating to the matter of a French federation, asking that a French correspondent be appointed for three months, and that 25,000 French leaflets and 25,000 French platforms be printed for distribution; also suggesting that a French speaker tour the New England states and Louisiana during the campaign.

Comrade Russell addressed the committee upon the subject.

Moved that an appropriation of \$300.00 be made for the purpose of organizing work among the French, under the direction of the National Secretary, and that the leaflets and platforms be printed as requested. Carried.

A night letter from J. B. Osborne was read again requesting a donation of \$1,000 for the recall campaign in Oakland, California, the matter having been deferred from the May meeting.

Moved that in view of the financial condition of the party the request be declined. Carried.

Miscellaneous.

The National Secretary asked for authority to purchase an adding machine for the office at a cost of \$350.00 or less.

Moved that he be empowered to purchase the adding machine if the office work demands it. Carried.

The National Secretary reported that additional room was needed for the headquarters.

Moved that he be authorized to rent additional office space. Carried.

A letter was read from Benjamin Gruenberg in regard to expense of \$28.07 in excess of amount appropriated for the use of the Committee on Education.

Moved that Comrade Gruenberg be informed that in exceeding the appropriation without warrant he, did so at his own risk and responsibility, and must bear it. Carried. (Hillquit asked to be recorded as voting no.)

The National Secretary stated that he had a number of communications from Alaska regarding the nomination of a candidate for delegate to Congress, asking him to take action in a dispute regarding the candidate. He stated that after considering the matter and consulting with Victor L. Berger and George H. Goebel, he had decided to take no action in the matter.

Moved that the course of the National Secretary be approved. Carried.

Letters were read from S. Liberty, Carl D. Thompson, Floyd C. Ramp, and Robert B. Ringler, bearing upon the subject of stereopticon lanterns and slides.

Moved that a committee of five be elected for the purpose of preparing a catalogue of about 250 slides to begin with, and to submit a plan for submitting the slides to locals and comrades. Carried.

Committee elected: Spargo, Haywood, Caroline A. Lowe, Winnie E. Branstetter, Carl D. Thompson.

The matter of electing a chairman and a treasurer for the Socialist party, as required by law was brought up. Hillquit reported that this must be done before making any disbursements for the campaign.

Moved that at the opening of the joint session of the National Executive Committee and the Campaign Committee, the National Executive Committee proceed to the election of the chairman and the treasurer of the Socialist party. Carried.

Moved to adjourn until 2:30 p. m. Carried.

Afternoon Session.

National Executive Committee called to order at 2:30 p. m., June 15, 1912, at the club room of the Briggs House. Present: Haywood, Hillquit, O'Hare and Spargo.

Victor L. Berger was nominated for chairman of the Socialist party. Elected.

John M. Work was nominated for treasurer of the Socialist party. Elected.

Moved that the Campaign Committee be given full and unrestricted authority to manage the campaign, subject to specific instructions which may from time to time be given to it by the National Executive Committee, and subject also to the right of the National Executive Committee to reverse any resolution of the Campaign Committee within fifteen days. Carried.

Upon inquiry, Campaign Manager J. Mahlon Barnes, stated that he had been paying himself \$35.00 per week as wages.

Moved that the wages of the Campaign Manager be fixed at \$35.00 per week. Carried.

Moved that the compensation of the Campaign Committee for services by them as such members should be the same as that of the members of the National Executive Committee, namely: \$3.00 per day and hotel expenses and railroad fare. Carried.

Moved that such members of the Campaign Committee as may be employed in the work of the campaign shall receive compensation at the rate of \$25.00 per week. Carried.

Gordon E. Nye of the Milwaukee

Leader was granted the floor and stated that the National Socialist Syndicate was prepared to furnish Socialist papers with a weekly service of cartoons, editorials, news features, etc., that at present it is supplying twelve papers at a cost of \$50.00 per week, and a weekly deficit of \$15.00, and that it could furnish the same service to a hundred papers at a cost per week of \$93.00. He asked that the National Executive Committee take over the service.

Moved that a sub-committee be appointed to see whether or not the features of the Syndicate, the mimeographed Propaganda Press Service issued by the National Office, and the National Socialist Press could be advantageously combined. Carried.

Committee elected consisted of Haywood, Spargo, Kate Richards O'Hare, J. Mahlon Barnes and Gordon E. Nye.

The meeting then adjourned to go into joint session with the Campaign Committee.

JOINT MEETING.

Joint meeting of the National Executive Committee and the Campaign Committee called to order at 3:30 p. m., June 15, 1912, at the club room of the Briggs House.

Present, Haywood, Hillquit, O'Hare and Spargo, of the National Executive Committee, Branstetter, Rodriguez, Simons and Thompson, of the Campaign Committee, and Seidel, candidate for vice-president.

A. M. Simons elected chairman.

Moved that the National Campaign Committee adopt its own rules. Carried.

Moved that a moving picture film be taken of the special features at the Socialist Press Picnic on Sunday, June 16, at an estimated cost of \$375.00. Carried.

Campaign Manager J. Mahlon Barnes submitted a plan for the distribution of literature during the campaign by issuing a call for 1,000 volunteers to cover the entire country during a period of three months, their compensation to consist of living expenses only, the literature distributed to consist of the platform of the party, one other campaign leaflet, and a literature catalogue in the form of an order blank. He estimated the total cost at \$70,000, and 50,000,000 pieces of literature would be distributed.

No action taken.

Moved that the National Campaign Committee publish 25,000,000 pamphlets on the most important and vital phases of Socialism, such pamphlets to be of 16 pages and contain, aside from the subjects treated, a copy of the National Platform, information about the Socialist party organization and a list of the most important party publications and Socialist books. These pamphlets to be furnished to all state and local organizations of the party upon payment of expressage or postage only, and to be distributed through such other channels as the Campaign Committee may from time to time determine. Carried.

Moved that Carl D. Thompson, who was about to leave in order to attend the Wisconsin state convention, be asked to convey the greetings of the Joint Session to the comrades of Wisconsin in convention assembled. Carried.

Adjourned to meet at 8 p. m.

Evening Session.

The Joint Session of the National Executive Committee and Campaign Committee met at 8 p. m., at the club room of the Briggs House.

Present, Haywood, Hillquit, O'Hare, Spargo, Branstetter, Simons, Debs and Seidel.

The presidential candidates were consulted as to available time.

Moved that Comrade Debs fill four consecutive dates in the month of June, to be equally divided between Maine and Vermont, the Campaign Manager and the State Chairman of Vermont to fix the route. Carried.

Comrade Seidel stated that he had engagements up to and including the first of July.

Moved that we send out a general notice that the Socialist Campaign will open on Labor Day, urging on the comrades the circulation of literature and especially letters of acceptance of the candidates, and that we announce that the first Sunday in October will be Socialist day, when simultaneous meetings will be held, and that the Sunday preceding election will be another great demonstration winding up the campaign. Carried.

Moved that there be a general distribution of the letters of acceptance of the presidential and vice-presidential candidates; that they be printed in pamphlet form in connection with the platform for general distribution, beginning Labor Day. Carried.

It was suggested that Debs and Seidel make a brief greeting in the form of phonograph records and supply them to locals for Socialist day, at the cost of the record.

Moved that this be referred to the Campaign Committee. Carried.

Moved that the candidates for president and vice-president be requested to prepare a letter to be sent to the meetings to be held on the first Sunday in October. Carried.

The following subjects were decided upon for the 25,000,000 pamphlets for free distribution during the campaign: "The Growing Grocery Bill," Address to Farmers, Address to Organized and Unorganized Labor, Issues and Candidates, Address to Women, The Socialist Party—The Socialist Program, Congressional Pamphlet, An Appeal to Children, On Southern Conditions, Letters of Acceptance by Candidates.

Adjourned until 9:30 a. m., Sunday, June 16.

Sunday Morning Session.

The Joint Meeting was called to order at 9:30 a. m., June 16, 1912, at the club room of the Briggs House.

Present: Haywood, Hillquit, O'Hare, Spargo, Branstetter, Rodriguez, Simons, Stedman, Thompson, Debs and Seidel.

O. F. Branstetter was elected chairman.

Harriman arrived a short time later.

The joint committee received certain protests relative to the selection of Comrade Barnes as Campaign Manager.

Harriman moved that the protests be not considered for the reason that the Joint Committee has no jurisdiction over the acts of the convention.

Haywood desired to go on record as against the following statement of Hillquit from the proceedings of the convention, which he read:

"Del. Merrick: The nomination of Barnes; that is what I refer to. Is the recommendation of the Committee a recommendation of Barnes?"

"Del. Hillquit: This comes from the committee on constitution and also from the National Executive Committee."

Hillquit moved to insert in the record (carried) the following portion of the proceedings of the convention:

"Del. Hillquit: This report, comrades, does not deal directly with the constitution. The constitution deals with our permanent form of organization. The supplementary report which we submit now deals with a temporary condition. That is the reason we make it separate. It bears upon the campaign before us. The Committee on Constitution finds that the plan of organization submitted by the committee and adopted by you will not enter into force until after the campaign. Meanwhile we will have the largest and most effective, I hope, campaign before us that we have ever had, with practically no National Executive Committee to conduct it unless our committee might make it possible to meet once or at most twice before the election. That certainly will be entirely insufficient for the purpose of planning and carrying out the details of a campaign of the magnitude anticipated by us. We therefore recommend that this convention elect a special Campaign Committee of five, selecting persons from such localities as will make it convenient for them to meet often, say about once a month to start with, and once every two weeks, and if need be once a week, during the close of the campaign."

"We also and particularly recommend to you the election of a Campaign Manager, for the reason that the regular business of the National Office is such today that it takes every moment of the present office force and the present secretary, and if we desire to carry on a vigorous campaign, we must have a special working department for that purpose. This, therefore, is our recommendation submitted to you, that we now proceed to elect a Campaign Committee and a Campaign Manager to conduct a campaign in conjunction with the National Executive Committee, after probably one conference agreeing upon the general lines."

"The motion was seconded and carried."

"The Chairman: Shall we now proceed to the election? Nominations are in order."

"Del. Slayton (Pa.): I move that the election of the Campaign Chairman be left in the hands of the National Executive Committee."

"Del. Hillquit: The National Executive Committee had the matter under consideration, and prefers that for this important position, this convention make the choice. We might be in a better position to elect the committee, but we wish the convention as a whole to elect a Campaign Manager, who will have the largest responsibility in this campaign, and whose position will be much more fortified if it comes with the sanction of this large and representative body rather than as the choice of the Executive Committee."

"The Chairman: We have a motion that has been carried, as I understand it, for the nomination and election of a Campaign Committee of five and a Campaign Manager. In what order shall we take them? Campaign Manager first, if there is no objection."

"Del. Hillquit: I desire to place in nomination for this position Comrade J. Mahlon Barnes. (Seconded.) In doing so I wish to state to the comrades that I have been on the National Executive Committee a number of years, and I have had opportunity and occasion to observe the work of Comrade Barnes, and while I have no more personal attachment to Barnes or interest in the matter than any other delegate, I wish to say that my colleagues on the National Executive Committee and on the several committees are unanimous in the opinion that the party has very few men, if any men, as efficient, as painstaking, as devoted, and, on the whole, as fit for the position as Comrade Barnes. I wish to state also, speaking now personally for myself, and I am very frank in this matter, I think this convention and this party owes a reparation to Comrade Barnes because of the campaign of slander instituted against him and the hunting up of matters dead and buried years ago and their publication in Socialist papers. I think this was one of the most disgraceful things ever suffered in the Socialist party. (Applause.) I think, as far as I myself am concerned—I do not care whether it is wise, whether it is politic—I think every man among us is entitled to justice, and I speak for Comrade Barnes because I know a great injustice has been done him. (Applause.)"

"Del. Merrick (Pa.): A point of in-

formation. Do I understand that this recommendation is the action of the National Executive Committee?

"Del. Hillquit: It is the nomination of Delegate Hillquit from New York."

"Del. Merrick: The nomination of Barnes; that is what I refer to. Is it the recommendation of the committee, the recommendation of Barnes?"

"Del. Hillquit: This comes from the Committee on Constitution and also comes from the National Executive Committee."

"Del. Merrick: With the indorsement of the National Executive Committee?"

"Del. Hillquit: A general recommendation, yes."

"The Chairman: I believe Comrade Hillquit was trying to make the point that his nomination was as an individual."

Haywood stated that he would like to have the fact made a part of the record that he had brought to the attention of the National Executive Committee his statement to the effect that the National Executive Committee has never at any time indorsed or recommended the nomination of J. Mahlon Barnes as Campaign Manager. He desired to go on record as opposed to the statement of Hillquit, when nominating Barnes, that he did so with the recommendation of the National Executive Committee.

O'Hare wished to go on record as saying that the matter of Barnes acting as Campaign Manager was not discussed in the Executive Committee in her presence.

Hillquit made the following statement: "I wish to state for the record that in making the nomination of Comrade Barnes as Campaign Manager and stating my grounds for that nomination, I intended to act and did act in my individual capacity as a delegate to the convention and on my personal responsibility; that the statement that my recommendation came with the sanction of the Committee on Constitution and the National Executive Committee was intended to refer and referred to the recommendation that the convention elect a Campaign Committee and a Campaign Manager; but, inasmuch as that statement implied formal action on the part of the National Executive Committee, I find upon examining the record that no such formal action was taken, although the matter was considered by the National Executive Committee informally, and I assert that the overwhelming majority of the committee expressed themselves in favor of such a recommendation. Referring to the statement about the sentiment of the members of the National Executive Committee present and several preceding committees, I reiterate my statement that the majority of such members have expressed themselves enthusiastically upon the fitness of the qualities of Comrade Barnes for executive work in the Socialist party. I did not intend to speak for Comrade Wm. D. Haywood; and if my statement in the convention can be interpreted as including a statement for Comrade Haywood I wish to declare publicly no conscious intention on this or any other occasion to speak for Comrade Haywood."

John M. Work presented his resignation from the office of treasurer, to which he had been elected the previous day.

Moved (as Executive Committee motion, that the resignation be accepted. Carried.

Otto F. Branstetter was nominated to act as treasurer of the Socialist party, and unanimously elected by the National Executive Committee.

Authors for the campaign pamphlets were then decided upon as follows:

"The Growing Grocery Bill," reprint, Allan L. Benson. Address to Farmers, A. M. Simons. Address to Organized and Unorganized Labor, Guy E. Miller. Issues and Candidates, Allan L. Benson. Address to Women, referred to Women's National Committee, they to select the author. The Socialist Party, The Socialist Program, John Spargo. Congressional Pamphlet, Carl D. Thompson. Appeal to Children, Eugene V. Debs. On Southern Conditions, Kate Richards O'Hare. Letters of Acceptance, Eugene V. Debs and Emil Seidel.

Haywood wished to go on record as opposed to the selection of Comrade Guy E. Miller to write the pamphlet addressed to Labor.

Moved that the names of the authors do not appear on these pamphlets. Carried.

Moved that a 24 or 25 page pamphlet be prepared on the nationalization of railroads. This to be used for campaign purposes, but not to be one of the pamphlets for free distribution. Carried.

The writing of this pamphlet was assigned to Charles Edward Russell and Seymour Stedman.

Moved that Seymour Stedman write a leaflet on Government Employees. Carried.

Moved that all applications for membership, organization work, the distribution of literature, sale of literature (aside from that authorized for special campaign purposes) remain in the hands of National Secretary Work, and that the work of Campaign Manager Barnes be confined to the routing of speakers specifically arranged for by the Campaign Committee, or for campaign meetings, the distribution of such literature as ordered by the Campaign Committee, and the handling of campaign supplies. Carried.

Moved that the Campaign Manager be authorized to supply requests for dates of speakers and employ such persons as are necessary to fill such dates, to the extent that such speakers can be made self-supporting. Carried.

Moved that the Campaign Committee make special efforts in congress-

sional districts where the prospect of electing Socialist candidates seems promising. Carried.

Adjourned to meet at 9:30 a. m., Monday, June 17.

Monday Morning Session.

The Joint Committee was called to order at 9:30 a. m., Monday, June 17, at National Headquarters.

Present: Harriman, O'Hare, Spargo, Branstetter, Simons, Thompson and Debs.

Branstetter elected chairman.

Spargo reported for the sub-committee appointed to consider the question of a news and cartoon service as outlined by Gordon Nye, and made the following recommendation:

"That the Campaign Committee be requested to make political cartoons a feature of the campaign, securing such cartoons from the National Labor Syndicate and supplying them to the press free or at cost."

Moved and adopted that the report be accepted and acted upon.

Moved that arrangements be made to tour Kier Hardie in this country during the campaign. Carried.

Comrade Haywood arrived.

The following resolution was offered by Comrade Harriman:

"Whereas, In the cities of Indianapolis, Los Angeles and elsewhere, the Federal and State courts are being used to persecute many organized workmen throughout the United States, and

"Whereas, This persecution is being conducted with the avowed purpose of weakening and destroying the labor unions, and

"Whereas, The charge that a nation-wide conspiracy to commit crime and violence in the labor organizations throughout the country is false, malicious and preposterous on its face; therefore be it

"Resolved, That we, the National Executive Committee and the National Campaign Committee of the Socialist party, in joint session, do hereby recommend that the Socialist locals throughout the country cooperate with the labor unions in holding protest meetings against the flagrant misuse of the Federal and State powers and in defense of the labor organizations and the working class."

Moved that the resolution be adopted. Carried.

Campaign Manager Barnes at this juncture re-stated the matters which had been acted upon before the arrival of Comrade Haywood.

Haywood asked to be placed on record as opposed to the motion to have Kier Hardie tour the country for the Socialist party.

Moved that the following terms be set for dates already made for Comrade Debs: Chicago, \$100.00; New Castle, \$100.00; New Kensington, \$50.00; four dates in Vermont and Maine, each \$25.00; St. Louis, \$100.00. Carried.

The following resolution was introduced by Comrade Haywood:

"On April 13, 1912, the whole civilized world was appalled and horrified by an outrageous massacre of striking Russian miners, a massacre equalling those of Kishineff and St. Petersburg in its fiendish brutality. The miners employed in the Lena gold mines, the richest in Russia, owned by a British syndicate, struck for an eight-hour work day, an increase of wages, the abolition of an illegal truck system, and other improvements in their conditions of employment. These conditions were so notoriously bad that in January last, the Siberian department of mines officially complained of them to the Minister of Commerce and Industry and against the illegal manner in which the mining syndicate treated its workers.

"The strike was conducted in an orderly and peaceable manner, the striking miners going so far as to organize patrols for the protection of the property of their employers. Maddened by the loss of their dividends and the decline of the price of their stock, the directors of the British syndicate appealed to the Russian authorities for protection of their vested interests. In response to this appeal soldiers were at once despatched to the scene of the strike, and their first act was to arrest the members of the strike committee. When the strikers gathered in mass meeting to protest against the arrest of their leaders and to demand their release, suddenly and without any provocation they were charged by the soldiers, the order to fire was given, and 163 miners were killed outright and 150 others seriously wounded.

"When the members of the Duma questioned the Minister of the Interior concerning this outrage he replied, 'Workers have always been killed on similar occasions, and they will continue to be killed.'

"In the name of the Socialist party we extend the sympathy of all our comrades to the bereaved relatives and friends of these victims of Russian despotism, and to those heroic comrades who still, in face of such terrible oppression and danger, are maintaining the world-wide and age-old struggle for human freedom.

"We recognize that the capitalist class of America is not less brutal or ruthless than the capitalist class of Russia or any other country; only the degree of economic and political power which we have attained affords the workers of America the slightest protection against capitalist brutality. Nothing but the fullest development of that power will enable us to establish our freedom, and to do our part in the great world struggle of our class.

"Resolved, That copies of this resolution be sent to the International Socialist Bureau, to the Socialist press, and to the party membership through the regular channels."

Moved that the resolution be adopted. Carried.

Moved that the Campaign Committee be instructed to prepare a resolution of protest against the arrest and imprisonment and trial of Ettor and Giovannitti, to be supplied to all locals of the party, so that on the opening day of the campaign there may be one great, nation-wide expression of the indignation of the working class. Carried.

Moved that the following rates be adopted for speaking dates for Debs and Seidel during the actual campaign:

Cities above 100,000 population, \$100.00. Cities between 50,000 and 100,000, \$75.00. Cities between 25,000 and 50,000, \$50.00. Cities below 25,000, \$25.00. Carried.

Moved that for dates between now and the opening of the actual campaign the matter of rates be left entirely in the hands of the Campaign Manager. Carried.

The joint session adjourned, to meet in separate committees.

EXECUTIVE COMMITTEE.

Sunday Afternoon Session.

The National Executive Committee met at 3 p. m., Sunday, June 16, at Room 606 Briggs House.

Present: Haywood, Harriman, O'Hare and Spargo.

O'Hare was elected chairman.

Literature.

The Editing Committee by Comrade Spargo reported further upon the manuscripts submitted to it for consideration.

"A Guilty World," by Erik Christenson, reported not suitable for our purposes. Report adopted.

"Resolved, That We Disfranchise the Men and Give Women the Ballot" by Esther Edelson, reported not suitable for our purpose. Report adopted.

"Labor, Awake!" by Robert Hunter; the Editing Committee will submit Comrade Hunter's manuscript to him with suggestions for its revision. Report adopted.

Miscellaneous.

A communication from the Woman's National Committee was read, as follows:

"To the National Executive Committee:—Believing the action of the Connecticut comrades in interpreting the state election laws as compelling the disfranchisement of the women in the party organization to be uncalled for, and believing the establishment of such a precedent would place the Socialist woman's party franchise in jeopardy, we recommend that their action be held invalid, and that we leave it to the old parties to take the aggressive position in this matter.

"In those places where the old parties do so interpret their election laws as to disfranchise the women within the Socialist party, that we make a vigorous fight to defend the right of the Socialist party to control its own organization.

"Every attempt on the part of the old parties to lessen the franchise privileges of the working-class in its political activity is a menace to our liberties.

"WOMAN'S NATIONAL COMMITTEE.

Meta Berger, Winnie E. Branstetter, Grace D. Brewer, Ella Carr, May Wood-Simons, Lena Morrow Lewis, Luella Twining."

Moved that the National Executive Committee has no jurisdiction in this matter. Carried.

The following resolution was then adopted:

"Whereas, In various states of the Union, the legal requirements for the conducting of political parties impose serious disabilities upon women by forbidding them to act in such political parties, and

Whereas, All such legal requirements necessarily conflict with the spirit of the Socialist party and its fundamental principle of sex equality; be it

Resolved, That the National Executive Committee calls upon all comrades everywhere to do all in their power to preserve the spirit and purpose of the Socialist party in this particular and to wage unrelenting war against the laws which impose such disabilities upon women."

Upon this point Comrade Harriman made the following statement, relating to similar difficulties in the state of California, and the manner in which they had been met by the party organization:

"The party organization is maintained independent of the legal organization. It holds party conventions, adopts its platform and nominates its delegates, excepting such tickets as are required to be nominated by petition, and also nominates its State Executive and State Central Committees; and the acts of these conventions are passed up to the legal convention, the delegates of which are elected by registered voters and not by red card members of the Socialist party. Such conventions are required by the organization to carry out the acts of the membership organization, both in regard to the adoption of the platform, the election of the legal State Central and Executive Committees, and such other officers as the law requires; also, the officers so elected as required by law perform only such functions as are required by law, after having received instructions from the party organization."

Communication from Local Toledo, Ohio, requesting that the National Executive Committee take immediate

action protesting against the proposed Root Amendment.

The committee considered it no longer necessary to take action in this matter.

A communication was read from R. Winson of Seattle, Wash., reporting himself as attorney for Leonard Oleson, enclosing copy of the record in the case and asking for financial assistance.

In view of the present status of the case, no action was taken upon the communication.

The report of the Committee on Ways and Means was read by the National Secretary, this report having been referred to the National Executive Committee by the national convention.

Moved to refer the recommendations, with the exception of the sixth, to the Campaign Committee, with the National Executive Committee's disapproval of the proposed assessment. Carried.

The report of the Committee on Party Press was read, it also having been referred to the National Executive Committee by the national convention.

The following motion, submitted by Job Harriman through correspondence, was renewed by him as a fulfillment of recommendation No. 1:

"I move that Arthur Brooks Baker be empowered to investigate the various machines and other equipment necessary or desirable to establish a printing plant for the rapid and cheap manufacture of leaflets, books and pamphlets, with instructions to record and systematize such information as:

"Cost of machine, cash payment required, terms of deferred payments.

"Production capacity, guarantee of manufacturer, and where available production records by users of similar machines.

"Labor requirements, number of workers to operate, wages, union regulations.

"Power consumption, size and price of motor equipment, cost of power in various localities.

"Floor space, to operate machine, to handle and store product.

"Maintenance, knife-grinding, roller-casting, and all incidentals and overhead costs which it is possible to schedule with reasonable accuracy.

"The whole investigation and report to cover a plant costing not over \$50,000.00 for machines, equipment and installation; and that such investigation be so systematized that experts may be able to pass upon the same; and that there be appropriated for such purposes from the general fund a sum equal to the salary of a first class printer for such time as is necessary to make such investigation, not exceeding two months." Carried.

Moved that recommendation No. 2 of the report be deferred until the next meeting.

Moved that recommendation No. 3 be adopted, substituting for the words "a party-owned and controlled newspaper" the words "a party-owned and controlled press." Carried.

A committee consisting of Algernon Lee, A. M. Simons and Mary O'Reilly was elected for the purposes set forth in the recommendation.

A motion made by John Spargo through correspondence was renewed, as follows:

"That all recommendations, requests for instructions, suggestions, etc., emanating from the National Office shall be made to this committee through the National Secretary and not directly by subordinate employees in the office." Carried.

Two letters were read from Gust Eisenstadt, Lima, Ohio, asking for information on various matters.

Moved that the National Secretary be instructed to reply to the letters and state that the National Executive Committee has no knowledge of any state constitution in variance with the national constitution; and that all the other questions must be asked of the proper state authorities. Carried.

Adjourned to meet Monday, June 17, 9:30 a. m., at National Headquarters.

Monday Morning Session.

The National Executive Committee met at 10:45 a. m., Monday, June 17, at National Headquarters.

Present: Haywood, Harriman, O'Hare and Spargo.

Harriman was elected chairman.

Miscellaneous.

O'Hare reported for the sub-committee on selecting an auditing company, as follows:

"We recommend that a detailed audit of the books of account of the National Office of the Socialist party be made by a firm of auditors employing certified public accountants. In addition, the auditing company will make a report on office efficiency with recommendations for more economical administration of the National Office.

"The auditing company shall also devise a system and forms for the use of the accounting department of the National Office so that the books will show the distribution of wages, expenses and all expenditures to each of the different departments of the National Office work. This is specially to include a distribution of the payroll expense through the use of time cards and a properly devised payroll in order that each employee may daily report to the department of work in which he is employed the number of hours so employed, the object being to obtain the cost of administering each and every separate department of the National Office.

"We recommend that one of the two following firms be chosen, in the order given: Baker-Vawter Company; Reckitt, Ernest & Co."

Moved that the report be adopted. Carried.

Communication from Local Marion County, Indiana, in regard to their campaign, in which they have hopes of electing a congressman.

Moved that it be referred to the Campaign Committee. Carried.

Literature.

The Editing Committee reported further on a leaflet entitled "What is Socialism?" by John R. McMahon.

Moved that it be published, and that the leaflet be referred to the author for some suggested changes, with the special understanding that no mention be made of the fact that it is a reprint from the New York Tribune. Carried.

Moved that Comrade J. F. Whitson, M. D., be informed that in view of the extensive preparations which the National Executive Committee has made for campaign literature, it finds itself unable to make use of his pamphlet. Carried.

A letter was read from Chas. H. Kerr & Co., in regard to three books, namely: "History of the Supreme Court," "Stories of the Great Railroads" and "Labor-Union Socialism."

Moved that the communication be received and action delayed until the committee has had an opportunity to examine the books. Carried.

Lyceum Department.

Moved that the rule establishing a maximum weekly wage of \$28.00 for employes in the Lyceum Department of the National Office be intended to give and does give authority to the National Secretary to employ such number of persons as he deems necessary at that rate. Carried.

Moved that the opening date of the Lyceum work be changed from February 1, 1913, to Sunday, January 12, 1913. Carried.

Moved that the Lyceum Manager be authorized to secure second class rates on a periodical leaflet confined to news of the Lyceum Department. Carried.

The qualifications of speakers for the Lyceum Course was discussed at length.

Adjourned to 2:30 p. m.

Monday Afternoon Session.

The National Executive Committee convened at 3:30 p. m.

Present: Haywood, Harriman, O'Hare and Spargo.

J. E. Snyder was given the floor on the subject of work in the South.

Moved that the National Secretary be empowered to employ not more than five additional field workers upon the recommendation of Comrade Snyder, at a cost not to exceed \$50.00 per month each. Carried.

Lyceum Department.

The subject of Lyceum speakers was resumed.

Moved that the Lyceum Manager be instructed to submit to the committee a list of speakers approved as first, second and third choice and emergency list; that he submit a ballot for the circuits asking the committee to vote for the speakers to be assigned to the respective circuits and the subjects to be assigned to the speakers, making it a preferential ballot. Carried.

Moved that the list of emergency speakers stand as the committee shall select at this meeting; that if at any time an emergency can not be filled from this list, that the National Secretary be empowered to meet it according to his best judgment. Carried.

The following speakers were approved for work on Lyceum circuits:

Carrie W. Allen, Oscar Ameringer, Samuel W. Ball, Wm. Francis Barnard, Ernest Theo. Behrens, John W. Bennett, Clyde A. Berry, Wm. Bessemer, Frank Bohn, C. W. Boswell, O. F. Branstetter, Robert Bruere, Phil Callery, Edw. A. Cantrell, James F. Carey, Paul H. Castle, W. P. Collins, Charles Dobbs, Wm. E. Duffy, J. L. Fitts, Thomas W. Freeman, L. F. Fuller, Wm. L. Garver, W. R. Gaylord, Adolph Germer, W. J. Ghent, Geo. H. Goebel, Covington Hall, W. G. Henry, Geo. F. Hibner, C. B. Hoffman, Dan Hogan, Walter Huggins, Fred Hurst, Emil Herman, Morris Kaplan, Robert Knight, Janet Fenimore Korngold, Ralph Korngold, Lena Morrow-Lewis, Anna A. Maley, I. S. McCrillis, Harry McKee, Walter J. Millard, Guy E. Miller, Ernest J. Moore, S. W. Motley, James Oneal, R. W. Perrin, Margaret Prevey, S. M. Reynolds, N. A. Richardson, Wm. E. Rodriguez, A. W. Ricker, Emil Seidel, J. W. Slayton, J. E. Snyder, Fred G. Strickland, Luella Twining, Ernest Untermann, Thomas Van Lear, Joshua Wanhooper, Florence Wattles, Fred C. Wheeler, Dan A. White, Max Wilk, T. W. Williams, Ben Wilson, Clyde J. Wright, Wm. A. Ward.

The following were also approved, although they had not applied:

Allan L. Benson, Ella Reeve Bloor, John C. Chase, Geo. W. Cooke, H. G. Creel, Eugene V. Debs, Sol. Fieldman, Gertrude Breslau Hunt, Robert Hunter, Geo. R. Kirkpatrick, Algernon Lee, Jack London, Meyer London, Clarence Meily, Edgar N. Phillips, Charles Edward Russell, C. E. Ruthenberg, A. M. Simons, Clinton Simonson, Seymour Stedman, Carl D. Thompson, J. Stitt Wilson, Stanley Wilson, Frank E. Wolfe.

The following were placed on the emergency list, in a number of cases at their own request:

Winnie E. Branstetter, Howard Caldwell, Lewis J. Duncan, Amy G. Edmunds, Cornelius F. Foley, Bertha M. Fraser, Mary L. Geffs, Geo. W. Hull, W. A. Jacobs, Henry T. Jones, John C. Kennedy, Harry W. Laidler, Robert Rives La Monte, Arthur Le Suter, Arthur M. Lewis, Guy H. Lockwood, Dr. Geo. N. Lunn, J. W. Martin, Isa. H. Maurer, Herbert M. Merrill, L. G. Pope, Rev. Wm. Prosser, J. C. Rhoads, Lee L. Rhoads, W. F. Rice, Sumner W. Rose, Roland D. Sawyer,

Kendrick P. Shedd, J. I. Shephard, May Wood-Simons, Henry L. Slobodin, Duncan Smith, E. J. Squier, S. M. Stallard, Gustave A. Strebel, Ethel Whitehead, Adelbert Truando.

Miscellaneous.

A communication was received asking that a committee from the Italian Section of the party have a hearing

before the committee in regard to propaganda among Italian workers during the campaign.

Moved that they be referred to the Campaign Committee. Carried.

The meeting then adjourned. GAIL McDERMUT, Secretary of Meeting. JOHN M. WORK, National Secretary.

National Executive Committee

June 3, 1912.

To the National Executive Committee. Dear Comrades: I herewith submit the following motion by Comrade Spargo:

"That all recommendations, requests for instructions, suggestions, etc., emanating from the national office shall be made to this committee through the National Secretary, and not directly by subordinate employees in the office."

Comment: "There has recently developed in the national office a practice which seems to me likely to lead to a great deal of trouble if it is not speedily checked. I refer to the practice of the Lyceum manager in particular of bombarding the members of the N. E. C. with recommendations, requests for action, suggested motions, and the like, directly, instead of through his superior officer, the National Secretary, who is the chief executive officer. If we are to permit this it is not difficult to see that we may at any time have a serious state of anarchy in the office. If the manager of the Lyceum may assume this right, why not the clerk responsible for routing speakers, the bookkeeper, or any other member of the staff?"

"Under date of May 23 Comrade Katterfeld raises the matter of the publication of a series of ten books to be sold in connection with the Lyceum course, and asks for immediate decision. By what right is this request made—especially in view of the decision of the N. E. C. at its last meeting to defer action until the next meeting? It must be apparent to every member that the matter is too complex and difficult to be settled by correspondence, without careful consideration and discussion of the numerous practical questions involved. Would ten books be better and more effective than five? Would one suffice? What sort of books do we want? These are far too important questions to be decided by correspondence without full discussion. Why is it that an employe of the national office is permitted to ignore the decision of the committee to defer consideration of the subject and force the matter upon us within a few days of that decision?"

"Again, under date of May 28 the manager of the Lyceum Bureau asks for a 'ruling' upon the action of the National Executive Committee in fixing the maximum wage in the Lyceum department at the national office. Comrade Katterfeld should get his interpretation of that rule from the National Secretary. It is very evident that the rule was purposely made elastic to allow the National Secretary some leeway. If Comrade Work did not understand that, he might with propriety apply to the National Executive Committee for its interpretation."

"For some time it has appeared to me that there was a very great danger of having the party regarded as a department of the Lyceum Bureau, instead of having the Lyceum Bureau regarded as part of the party organization—at least on the part of the Lyceum manager. That this is due to anything more than an abundant enthusiasm on the part of Comrade Katterfeld I do not believe for a moment."

"It does seem to me, however, essential to insist that he must obey the instructions of the National Secretary and the National Executive Committee. When the N. E. C. decides for reasons which seem to it good to fix the pay of lecturers (who are only to be employed for a few weeks) at a higher rate than clerks in the office (in practically permanent employment) that should end the matter—at least so far as the office staff is concerned. If the action is wrong there are constitutional provisions for vetoing it. We certainly do not employ Comrade Katterfeld and his assistants to lecture us by mail to the effect that the act of the N. E. C. is wrong—that the clerks should have the same weekly wage as the lecturers. We have something more important for our office employes to do."

Note by National Secretary: Not all the maledictions should be heaped upon Katterfeld. Barnes and Baker have also sent communications direct to your committee. While I think all these matters might well have been allowed to wait until the next meeting, I take it that any party member has a right to address your committee if he so desires. Such communications are not official and you are not under any obligation to act upon them unless they result in motions by members of the committee.

I also submit the following motion by Comrade Harriman: "I move that Arthur Brooks Baker be empowered to investigate the various machines and other equipment necessary or desirable to establish a printing plant for the rapid and cheap manufacture of leaflets, books and pamphlets, with instructions to record and systematize such information as—

Cost of Machine. Cash payment required. Terms of deferred payments. Production Capacity. Guarantee of manufacturer and,

where available, production records by users of similar machines.

Labor Requirements. Number of workers to operate. Wages. Union regulations.

Power Consumption. Size and price of motor equipment. Cost of power in various localities.

Floor Space. To operate machine. To handle and store product.

Maintenance. Knife grinding, roller casting and all incidental and overhead costs which it is possible to schedule with reasonable accuracy.

"The whole investigation and report to cover a plant costing not over \$50,000 for machines, equipment and installation; and that such investigation be so systematized that experts may be able to pass upon the same; and that there be appropriated for such purposes from the general fund a sum equal to the salary of a first-class printer for such time as is necessary to make such investigation not exceeding two months."

I also submit the following amendment by Comrade Irvine to the motion by Comrade O'Hare: "I move to amend that we meet June 15."

Comment: "I cannot attend on June 22. Hillquit and Haywood tell me they can meet June 15."

June 4, 1912.

To the National Executive Committee. Dear Comrades: Reporting on the vote for Campaign Committee, on May 31, in order to close the vote because of the urgency of the matter, I wired those who had not voted.

Votes were cast as follows: O'Hare—Thompson, Brandt, Rodriguez, Branstetter, Stedman.

Irvine—Reynolds, Simons, Rodriguez, McDonald, Stedman.

Berger—Thompson, Brandt, Rodriguez, Simons, Stedman.

Spargo—Thompson, Brandt, Rodriguez, Branstetter, Stedman.

Hillquit—Thompson, Simons, Rodriguez, Branstetter, Stedman.

Harriman's and Seidel's votes were received June 3, too late to be counted.

Debs requested to be excused from voting.

The various candidates received the following votes:

- Rodriguez 5
Stedman 5
Thompson 4
Brandt 3
Branstetter 3
Simons 3
Reynolds 1
McDonald 1

Rodriguez, Stedman and Thompson were therefore elected.

Brandt, Branstetter and Simons were tied for fourth and fifth places.

The following lettergram was sent June 1 to the members of the Executive Committee and to Seidel, in order to decide the tie:

"Stedman, Rodriguez and Thompson elected on Campaign Committee. Brandt, Branstetter and Simons are tied for fourth and fifth places. To decide the tie please vote for two of these by wire."

In reply to this lettergram, the following votes were cast:

- Berger—Simons, Brandt.
Harriman—Simons, Branstetter.
Haywood—Simons, Branstetter.
Hillquit—Simons, Branstetter.
O'Hare—Brandt, Branstetter.
Seidel—Simons, Brandt.
Spargo: Simons, Branstetter.

Irvine apparently did not receive the lettergram.

The three candidates received the following votes:

- Brandt 3
Branstetter 5
Simons 6

Branstetter and Simons are therefore elected, and the full committee is as follows:

Branstetter, Rodriguez, Thompson, Simons, Stedman.

Reporting on my question regarding vacations for employes, Berger, Hillquit, Irvine and Spargo expressed themselves in the affirmative. Harriman and Haywood not heard from. O'Hare as noted below:

Comment.

Irvine: "I feel sure the whole comradeship will back you in making it two weeks instead of one."

O'Hare: "If you will amend your request to give each employe of the National Office a week's vacation on pay who has been in the employ of the party for one year I shall vote yes. This is the commonly used plan and I think it best to adhere to it."

Spargo: "If you will look up the matter I am sure that you will find a rule adopted by the last N. E. C. and never rescinded, granting all the permanent staff two weeks' vacation with full pay. That seems to me sufficient authority for you."

"Otherwise I should vote yes on your request."

(Note.—The action referred to was taken at the October, 1910, meeting, and was as follows: "That organizers be allowed two weeks' vacation with pay for each consecutive six months of field work.")

Affirmative action has therefore been taken.

June 15, 1912.

To the National Executive Committee. Dear Comrades: Reporting on motion regarding recommendations, suggestions, etc., emanating from the National Office, Harriman, Hillquit and Spargo voted yes. The other members were not heard from. No action taken.

Reporting on motion regarding printing plant investigation, Harriman voted yes. Berger, Haywood, Hillquit, Irvine and O'Hare not heard from.

Comment by Spargo: "I do not vote; I prefer to leave it to our meeting, but have no serious objection."

No action taken.

Reporting on motion and amendment regarding time of meeting, Harriman, Hillquit, Irvine and Spargo voted for June 15. Berger and O'Hare for June 22. The amendment to meet June 15 was therefore adopted.

June 20, 1912.

To the National Executive Committee. Dear Comrades: At your recent meeting you selected a list of Lyceum lecturers, grouping them as shown in the enclosed lists.

After your committee adjourned Comrade Spargo remained at the request of Comrade Katterfeld and myself, and together they made the accompanying tentative list of circuits and assignments of subjects and circuits of speakers.

The assignments of course are suggestive merely. In making them, all the information at hand regarding the special qualifications of the speakers and the conditions and needs of the particular sections of the country were considered.

If you approve the assignments as a whole, kindly so inform me. Otherwise, please vote on the enclosed ballot, giving your first and second choice in each division where this does not agree with the tentative selection submitted.

You will note that only twelve speakers are on the approved list besides those assigned. This is not enough for safety, since a number of those now on the list are almost sure not to be available. If you know of suitable lecturers not on this list, kindly sent their names so that we can submit them for the consideration of the entire committee.

Fraternally yours, JOHN M. WORK, National Secretary.

National Notes

The national office has been authorized to sell stereopticon machines for the use of lecturers in giving illustrated lectures, and can now furnish the Victor stereopticon machine for \$42.50 delivered.

The "Victor" is made of aluminum, making it light and easily carried. Although the machine is small, it does the work of the large, heavy machines. It can be focused from any position and distinctly shows pictures over 70 feet. The outfit includes a case and rheostat. This machine is for use with electrical power only, but the makers promise to furnish an acetylene attachment in the near future, price of which will be announced later.

Address, National Office, Socialist Party, 111 N. Market street, Chicago. It is hoped that the national office will also be able to furnish stereopticon slides soon, the National Executive Committee having appointed a committee to prepare a list of them. Until further announcement, parties wanting slides should address S. Liberty, 1432 Crotona Park, E., New York, N. Y.

The new edition of "How to Conduct a Local or Branch" is ready for delivery. Price, the same as before, \$5.00 per 1,000; same rate in any quantity, less or more. Address, National Office, Socialist Party, 111 North Market street, Chicago.

South Carolina has wheeled into the column of organized states, a state charter having been granted by the National Executive Committee at its recent meeting. By referendum vote of the state membership, Wm. Eberhard of Charleston has been elected state secretary and J. A. Royal of Columbia as national committeeman.

A state ticket has also been nominated at follows: For governor, R. B. Britton, Charleston; for lieutenant governor, J. C. Inabnet, Newberry; for secretary of state, P. I. Rawl, Lexington; for comptroller-general, J. F. Fink, Leesville; for attorney-general, John A. Mette, Columbia; for state treasurer, J. W. S. Pigler, Spartanburg; for superintendent of agriculture, C. W. Thompson, Reevesville; for railroad commissioner, F. R. Charles, Pelzer; for presidential electors, C. A. Green, Spartanburg; I. N. Moody, Greenville, J. C. Raborn, Greenwood; E. W. Pack, Piedmont; J. F. Creighton, Columbia; C. M. Newman, Charleston; John C. Gibbs, Georgetown; F. K. Knight, Gaston, and D. H. McLaughlin, Jefferson.

This leaves only Delaware, Alaska, and the insular and isthmian possessions unorganized. Alaska already has enough locals and will be organized as soon as its vast distances and difficult means of communication will permit. Delaware has almost enough.

Woman's National Committee

June 10, 1912.

To the Woman's National Committee. Dear Comrades: The enclosed letter, with enclosures, is being sent to all of the delegates to the convention.

I am enclosing a list of names of women who are on the Socialist platform, either locally or nationally. Will you make a list of all Socialist women speakers whom you are willing to indorse for national party work? Also a list of those whom you believe capable of doing good work in their own states?

The enclosed list is not complete. These are all of the women who are doing any speaking, so far as I know, and of some of these I am not at all sure. We need speakers at once to place in states where suffrage is the issue.

The purpose of such a list is this: We should have on hand a complete list of women speakers. When a call is sent in for a woman speaker, we can refer the inquirer to some competent local speaker. Or, if the request is for a first-class speaker, the General Correspondent should have a list of those who are indorsed by the Woman's National Committee, somewhat as the National Executive Committee has an approved list for the Lyceum.

In the enclosed letter to the state secretaries I am asking them for similar information.

The demand for women speakers will be greater this year than ever before, and we should be prepared to make the best possible use of the opportunity afforded by a presidential campaign.

The National Office bought a stereopticon lantern and slides for use by the Woman's National Committee. These have been turned over to Comrade Madge Patton Stephens, who is preparing to enter upon the work in Pennsylvania as soon as arrangements can be completed.

The enclosed Plan of Work is submitted by Comrade Minnie Levinger for your consideration.

The subcommittee on the Plan of Work desires to place the present plan in the hands of each member of your committee with the request that each make such changes as she deems best; these to be returned to the General Correspondent, who will summarize the ideas and resubmit to you for further consideration. I am enclosing the Plan of Work leaflet for this purpose.

Rochester, N. Y., comrades suggest that the name of Comrade Shedd be placed before you for national organizer of Socialist schools and young people's leagues. The enclosed letter is submitted for your information.

The Woman's Agitation Committee of Cook County is preparing to sell a sanitary celluloid folding drinking cup and holder at the press picnic, June 16. It will be decorated with the pictures of Debs and Seidel, the clasped hands, Socialist verse and Marxian call on one side. On the other this statement, "Distributed by the Woman's Committee, Socialist Party," and will sell for 10 cents each.

The National Campaign Committee is preparing to use this as one of five or six novelties to raise campaign funds. By inserting the word "National" between Woman's and Committee it would serve to advertise the Woman's National Committee in the national campaign. Are you in favor of this?

The enclosed leaflet was published by the Social-Democratic party of Milwaukee. With some changes it can be used to good advantage nationally. Are you in favor of publishing it as one of the Woman's National Committee leaflets? If so, I shall secure permission to use it and it will be published with the next set sent to the printer.

The Stern and Malkeil leaflets are now in the hands of the printer.

Ohio has accepted Luella Twining's services, though they do not state for what period.

Kansas has accepted Ethel Whitehead. Michigan writes for Luella Twining from July 10 to September 10. She is going to Ohio. I am at a loss to know whom to suggest for Michigan, Oregon and Wisconsin. Comrades Twining and Whitehead are not regularly elected organizers for the Woman's National Committee.

This matter of women speakers is pressing. A woman sent out by the Woman's National Committee should be in the first class—we must have a list of these at the earliest possible moment.

The enclosed letter to state correspondents is being sent out this week, also the Progressive Woman circulars.

June 23, 1912.

To the Woman's National Committee. Dear Comrades: The action taken on questions submitted on June 10 is as follows:

1. Those favoring approved list of speakers on file—Yes, Simons, Brewer, Twining, Branstetter. Not voting, Berger, Carr, Lewis. Carried.

2. Suggestions for amended Plan of Work, submitted by Comrades Brewer and Twining.

Suggestion by Comrade Brewer: "The only amendments I would propose for the Plan of Work would be those necessary to make it conform to the new constitution, and a few others as follows: That a woman's committee be elected in every local, whether there is a woman member

or not. Let the men comrades look after this work until they get a sufficient number of women in the local to take it off their hands.

The plan is simple and I see no reason why it should be enlarged upon. I should like something included in it whereby we might reach the women out of touch with the party organization, and I think we might get them to become members-at-large and get them to distribute literature."

Suggestion by Comrade Twining: "I suggest that the paragraph beginning 'Clubs or classes already in existence, etc.' be omitted and that the following be substituted: 'Study classes should be organized for education in the Socialist philosophy.' As the Socialist movement exists to emancipate the worker, both men and women, study classes composed of both men and women are more beneficial than those composed of women alone."

3. Those favoring the campaign cup—Yes, Brewer, Twining, Simons, Branstetter.

Not voting, Berger, Carr, Lewis. Carried.

Comment by Brewer: "I favor the campaign cup plan in places where it can be used, such places as Chicago, or any large picnic in the large towns. It would not be practical in the rural districts."

4. Those favoring publication of Milwaukee leaflet—Yes, Branstetter, Brewer, Simons, Twining.

Not voting, Berger, Carr, Lewis. Carried.

5. Regarding Rochester suggestion.

Comment by Brewer: "If decided to put organizer in the field to look after the formation of Socialist schools, I think the comrade from Rochester and his plan would be the best to follow at this time, confining him to the larger cities."

Comment by Simons: "Comrade Bertha Maily wrote me concerning Comrade Shedd. I favor using him as an organizer for the purpose designated."

Motion by Twining: "I believe Professor Shedd will do valuable work in organizing Socialist schools and young people's Socialist leagues, and move that the Woman's National Committee devise ways and means of procuring Professor Shedd's services."

Comment by Lowe: "I have written Comrade Shedd suggesting that he place before you his ideas regarding the best ways and means for carrying on this special line of work."

6. Organizers suggested:

Twining—Theresa S. Malkiel. Simons—For Oregon, Anna A. Maley or Mila Tupper Maynard. For Michigan, Janet Fenimore-Korngold or May Strickland.

New Business.

The enclosed letter is being sent to the Woman's National Committee, the state correspondents, and a few women who are accredited as being fully competent to speak from the Socialist platform. It will be sent to all others in the list who receive the majority vote of your committee. Will you kindly go over the list again, CAREFULLY, crossing out those you know to be unavailable for any reason, underlining those you know to be exceptionally strong.

Comrade Levinger's outline, which was overlooked in my last report, is herewith enclosed.

Comrade Wattles has submitted the enclosed suggestions for Propaganda Among Women to the State Executive Committee of Indiana. This is merely the first draft of the plan and is open to revision. Have you any suggestions to make regarding it?

Comrade Meta L. Stern submits the following plan for carrying on her work as foreign correspondent, and asks for action on it.

"At the last international conference of Socialist women the 'Gleichheit' was made the official international organ, and since then it regularly publishes official reports of work done by Socialist women in various countries. Further information could be found in other European women's papers. My suggestion therefore is:

"1. That I be permitted to subscribe, at the expense of the committee, to a number of foreign Socialist women's papers, that I will carefully select.

"2. That I send regular reports of our work to these representative papers.

"3. That I translate and compile all important information gathered from these foreign papers and be given regular space in the Progressive Woman each month for the publication of such international notes. In this manner the work could be systematized and the activity of Socialist women the world over could be clearly and simply presented in our own official organ."

Fraternally submitted, CAROLINE A. LOWE, General Correspondent, Woman's National Committee.

The Polish section of the Socialist party has published four leaflets in the Polish language, namely, "What Socialists Want and What They Don't Want," "The Working Class Movement," "Class Struggle," and "What We Have Under Capitalism." Price, prepaid, 20 cents per 100; \$1.50 per 1,000. Address, H. Gluski, Translator-Secretary, 111 N. Market street, Chicago.

National Secretary's Financial Report for Month of June, 1912

RECEIPTS.	
Cash on hand June 1, 1912...	\$ 6.77
Bank balance June 1, 1912...	391.88
National Dues—	
Alabama	\$ 10.00
Arizona	43.30
Arkansas	70.00
California	200.00
Colorado	100.00
Connecticut	32.95
District of Columbia	20.00
Florida	50.00
Georgia	10.00
Idaho	53.35
Illinois	253.20
Indiana	214.60
Iowa	90.00
Kansas	150.00
Kentucky	30.00
Louisiana	30.00
Maine	17.15
Maryland	15.20
Massachusetts	234.90
Michigan	155.45
Minnesota	45.45
Missouri	160.00
Montana	9.70
Nebraska	27.50
Nevada	35.00
New Hampshire	54.00
New Jersey	206.65
New Mexico	10.00
New York	508.80
North Carolina	11.00
North Dakota	78.75
Ohio	322.85
Oklahoma	100.00
Oregon	42.00
Pennsylvania	549.20
Rhode Island	31.40
South Dakota	20.00
Tennessee	25.00
Texas	200.00
Utah	36.50
Vermont	22.00
Virginia	.05
Washington	345.00
West Virginia	83.00
Wisconsin	252.75
Wyoming	36.90
Unorganized—	
Alaska	40.00
Delaware	6.00
Puerto Rico	4.00
South Carolina	16.50
Members at Large	2.05
Total Dues	\$5,067.15
Supplies	293.92
Literature	838.86
Buttons	185.76
Miscellaneous	20.70
Ettor-Giovanitti Defense Fund	76.60
San Diego Free Speech Fund	15.75
Telegram refunds	.60
Express refunds	10.08
Refund on Convention Mileage—	
Frans Bostrom, Everett, Wash.	7.50
H. M. Wells, Seattle, Wash.	8.20
Total Receipts	\$6,923.77

EXPENDITURES.	
General expense	\$ 33.27
Express and freight	397.94
Postage	412.94
Telegrams and telephone	58.86
Printing	653.75
Literature	1,266.80
Office equipment	21.00
Stationery and supplies	40.51
Refunds	2.70
Rent	208.33
Miscellaneous	1.61
Louis Kopelin (press service)	100.00
National Executive Committee meeting	571.75
San Diego Free Speech Fund	15.75
Ettor-Giovanitti Defense Fund	76.60
V. L. Berger, clerk hire	125.00
W. E. McDermut	200.00
Campaign Department, loan	260.00
Insurance	70.56
Exchange	10.87
Wages—	
John M. Work	\$125.00
J. W. Sarlund	105.00
Caroline A. Lowe	105.00
Gail McDermut	105.00
M. Levinger	105.00
H. B. Fish	105.00
Bertha Hale Brown	90.25
Edna M. Koop	78.90
Anna B. Campbell	61.80
Jennie Kewitz	65.00
Mary S. Schupp	60.00
Cleo Stephenson	52.90
Joseph Weber	41.40
Joseph Corti	50.00
Joseph Novak	50.00
N. J. Christensen	50.00
H. Gluski	75.00
F. Petrich	50.00
Otto Turkart	25.00
Extra help	32.45
Organizers—	
John C. Chase	\$ 50.00
Robert Lawrence	96.48
W. R. Snow	28.55
J. E. Snyder	100.00
F. Werenskjold	126.19
Appropriations—	
The Progressive Woman	\$200.00
Chicago Daily World	200.00
Petty Cash Fund	400.00
Petty Cash Fund	15.75
Total expenditures	6,777.91
Bank balance June 30, 1912...	145.86
Total	\$6,923.77

ASSETS AND LIABILITIES.	
ASSETS.	
Bank balance July 1, 1912...	\$ 145.86
Outstanding accounts, states, locals, etc.	1,106.10
Lyceum Department	3,274.29
Campaign Department	498.76
New York Call sub-cards	851.00
Party buttons (approximate)	600.00
Total	\$6,923.77

Supplies, stationery, local account books, etc. (approximate)	3,000.00
Literature (approximate)	4,000.00
Office furniture and fixtures	2,355.00
Total	\$15,831.01

LIABILITIES.	
Chas. H. Kerr & Co., literature	\$ 45.05
H. G. Adair, printing	1,476.50
A. B. Dick & Co., mimeograph supplies	114.23
M. Fry & Co., supplies	32.75
The MacMillan Co., literature	.48
B. W. Huebsch, literature	2.22
Jas. H. O'Neil Co., buttons	321.75
F. J. Kain & Son, printing	233.40
P. F. Pettibone & Co., supplies	3.95
Partridge & Anderson Co., cuts	2.25
John F. Jordan, literature	17.50
Sullivan - Blakely Printing Co.	11.25
Joshua Wanhope, flag pins	90.00
Horner's Stationery Stores	11.48
Underwood Typewriter Co.	175.50
A. H. Andrews Co., office furniture	71.50
W. E. McDermut, balance reporting convention	295.37
Equity Series, literature	1.35
Library Bureau, office fixtures	87.30
The Elliott Co., addressing supplies	2.40
United States Express Co.	796.14
Consumer Box Mfg. Co.	7.20
G. B. Williams Co., printing	679.55
Pilcher-Hamilton Co., paper	308.52
Geo. H. Doran Co., literature	2.62
J. W. Butler Paper Co.	148.97
John A. Wickum, electric fixtures	29.00
F. S. Webster Co., supplies	3.15
Christian Socialist, literature	.36
H. H. Hoffman Co., Printing	46.00
Moser Paper Co.	85.50
Pearson Publishing Co., literature	1,000.00
P. Mitchell, pennants	127.75
K. I. Herman Co., supplies	81.63
Lucke Badge & Button Co.	146.15
P. Casey's Sons, office furniture	92.00
Heslop-Ryland Desk Co., office furniture	70.20
Sewell-Clapp Mfg. Co., envelopes	20.35
Chicago Daily World, balance appropriation	800.00
Committee on Commission Form of Government—Balance appropriation	11.65
National Lettish Organization, balance appropriation	100.00
Local Oklahoma City	350.00
Outstanding credit memos	88.07
Total	\$ 7,991.04

LYCEUM DEPARTMENT.

RECEIPTS.	
Bank balance June 1	\$1,131.30
Cash balance June 1	20.68
Received from locals on Lyceum 1911-12	865.34
Miscellaneous subscriptions	15.83
Received from locals on Lyceum 1912-13	200.00
Interest for May	8.28
Miscellaneous receipts	9.48
Total receipts	\$2,250.91

EXPENDITURES.	
General expense	\$ 12.20
Cost of subscriptions	565.60
Postage	269.98
Telegraph and telephone	1.00
Printing	19.93
Stationery and supplies	21.62
Freight and express	4.40
Office fixtures	1.20
Exchange for May	1.50
Lecturers—	
Ralph Korngold	29.41
Wages—	
L. E. Katterfeld	\$ 119.00
J. L. Fitts	90.00
A. B. Baker	84.00
Greeley Baker	82.00
E. D. Parsons	78.00
M. J. Ball	77.00
V. R. Rindler	75.00
A. M. Guy	60.50
Oliver Baker	60.00
Extra help	8.00
Petty cash fund	733.50
Petty cash fund	70.68
Total expenditures	\$1,731.02
Bank balance July 1	519.89
Total	\$2,250.91

ASSETS.	
Bank balance	\$ 519.89
Cash on hand	70.68
Office fixtures	611.20
Stationery and supplies	593.00
Due from—	
Ben F. Wilson (for cuts)	3.60
A. W. Ricker (overpaid)	97.33
Total	\$1,895.70

LIABILITIES.	
National Office	\$3,274.29
H. G. Adair	3.50
Horner's Stationery Stores	11.60
F. J. Kain & Son, printing	188.35
M. Fry & Co., supplies	.85
H. H. Hoffman Co., printing	4.75
A. B. Dick & Co., mimeograph supplies	20.63
John Mors Co.	1.50
Total	\$3,505.47

UNFINISHED BUSINESS.

Amount still due from locals	\$8,431.35
Needed for outstanding subscriptions (estimated)	2,000.00

SAN DIEGO FREE SPEECH FUND.	
Local Catesby, Okla.	\$ 2.00
Local Philadelphia, Pa.	13.75
Total	\$ 15.75

ETTOR-GIOVANITTI DEFENSE FUND.	
Twelfth Ward Local, Minneapolis, Minn.	\$ 5.00
State Committee, Orange, N. J.	30.00
Local Cheyenne, Wyo.	5.50
Local Duluth, Minn.	35.10
Jewish Branch S. D. P., Milwaukee, Wis.	1.00
Total	\$ 76.60

PROPOSED REFERENDUMS.

Local Deer Island, Socialist party of Oregon, fourteen members in good standing, requests seconds for the following motion:

"That a special assessment of 10 cents be levied to raise a fund to help prosecute the fight for free speech, press and assemblage."

Poplar Bluff, Mo., June 12, 1912.

The Socialist local of Poplar Bluff, Mo., in special meeting assembled on June 11, 1912, adopted the following resolution: "That we demand the recall of Comrade J. Mahlon Barnes as campaign manager and call for national referendum of the membership of the Socialist party."

Thirty-two members in good standing on June 1, 1912.

Portsmouth, O., June 10, 1912.

Portsmouth Local of Socialist party of Ohio, 100 members in good standing, requests seconds for the following motion: "That we demand the resignation of Comrade J. M. Barnes as campaign manager of Socialist party for 1912."

Regular session held June 9, 1912.

Branon, Texas, Local No. 1093 moves that J. Mahlon Barnes be at once removed as chairman of the National Campaign Committee and that the National Campaign Committee be instructed to name his successor with the sanction of the presidential and vice-presidential candidates.

Comment: "We do not wish to bring on a fight merely because of the personal failings of Barnes; but this is no longer a personal issue. It has become a matter of principle."

"Here we have a man who resigns as national secretary under fire, after the National Executive Committee does its level best to keep him in office. However, it is shown beyond the shadow of a doubt that though married he has been living in adultery with another woman, and so he had to go, willy nilly."

"Later on this man seeks 'vindication' by accepting the nomination for national executive committeeman. He is defeated."

"Then in the last moments of the national convention, when all is confusion, a motion is railroaded through, without previous warning that such a move was on foot, creating the office of national campaign manager especially for this man, an office that now has greater importance while it lasts than any other national party office. Those delegates who would have opposed such a move—and it later developed there were many—were taken off their guard."

"So Barnes is once more foisted upon the party against its will, through the machinations of a few old-time members of the N. E. C., who do this because they do not wish to admit that they were in the wrong when they tried to suppress the charges against Barnes and, perhaps, because they are tied up with Barnes in other ways."

"We dare not believe that if this matter is properly brought to the attention of such clean, upright men as Eugene V. Debs and Emil Seidel that they will approve of such a man managing their campaign, and we call upon them and upon every decent comrade in the nation to take a prompt and fearless stand against him."

"We believe that but for the suppression of the stenographic reports of the Barnes investigation by the N. E. C., the older members of the latter would not have dared to again foist this man upon the membership. Even as the matter stands, they have done a thing that not only must be rebuked, but will be rebuked."

"The Socialist party membership does not stand for free love, nor does it stand for machine rule."

Local Olivia, McHenry Co., N. D.

"Whereas, Former National Secretary J. Mahlon Barnes was suspended from the office of national secretary for immorality, hereby initiate a referendum to annual his appointment as national campaign manager.

Members in good standing, twenty-six.

The following motion by Local New Orleans, La., is submitted to the national secretary of the Socialist party for referendum vote:

"Resolved, That the national Socialist party hereby recalls the action of the National Socialist convention in appointing Comrade J. Mahlon Barnes campaign chairman, and instructs the national committee to appoint some other comrade with a better record to the place."

"It is the sense of Local New Orleans that the reasons which compelled Comrade J. Mahlon Barnes to resign as national secretary during 1911 are of themselves sufficient to disapprove of the action of the convention in giving him any place within the affairs of the national party, without such an important position as was given him in the closing hours

of the convention without full discussion."

Warren, Ohio, June 13, 1912.

Local Warren moves the following motion, and asks that it be printed in the Bulletin and asks for seconds:

"That we protest against the election of J. Mahlon Barnes as campaign manager, and ask for his immediate recall."

Wagoner, Okla., June 17, 1912.

"Moved that the N. E. C. recall J. Mahlon Barnes from the office of campaign manager."

Comment: "No complaint is made as to the abilities of Mr. Barnes. It is, however, the opinion of Wagoner Local that men of better moral character can be found to fill all offices satisfactorily."

Lockland, Ohio, June 18, 1912.

"Whereas, The National Executive Committee of the Socialist party was lately compelled to accept the resignation of J. Mahlon Barnes from the office of national secretary, as a convicted adulterer, and

"Whereas, The National convention of the Socialist party, assembled at Indianapolis, Ind., in May, 1912, elected said J. Mahlon Barnes as campaign manager, and

"Whereas, We consider this action a deep disgrace to the Socialist party and an offense to the rank and file who stand for honor and decency,

"Local Lockland, Ohio, in regular session June 14, 1912, with eighteen members in good standing, moves that we issue a call for a national referendum, demanding the immediate recall of J. Mahlon Barnes from the office of national campaign manager."

Seconds of Referendums.

Seconds of referendums have been received during June as follows:

That proposed by Local Butte, No. 1, Montana, first published in the Weekly Bulletin of April 13, relating to proposed plank in party platform that the working class organize along lines of industrial development, has been seconded by Locals Boise, Idaho, and Manhattan, New Mexico.

That proposed by Branch El Cajon, Local San Diego, Cal., relating to printing occupations of candidates for party nominations on ballots, has been seconded by Local Toledo, Ohio.

That proposed by Local Paducah, Kentucky, relating to uniting the Socialist party and Socialist Labor party, has been seconded by Locals Manchester, N. H. and Colorado Springs, Colo.

That proposed by Local Branon, Texas, first published in the Weekly Bulletin of June 15, relating to removal of J. Mahlon Barnes as Campaign Manager and appointment of a successor by the National Campaign Committee and presidential and vice-presidential candidates, has been seconded by Locals Toledo, Ohio; Local Cook County, 6th, 7th and 9th Ward Branches, Ill.; Lamoni, Iowa; Clay Center, Kansas; West Plains, Mo.; Boswell, Okla.; Great Bend, Kansas; Cresco, Branch Roff, Okla.; Wagoner County, Coweta Branch, Okla.; Velva, N. D.; Kingman, Kas.; Steelton No. 1, Pa.; Harvey German Branch, Ill.; Thornton, Ill.; Garden City, Kas.; Rosedale, Kas.; Mountain Grove, Mo.; Jennings, La.; Alma, Neb.; East Las Vegas, N. M.; Piqua, O.; Lincoln, Kas.; Gooding, Idaho; Lockland, O. and Nickerson, Kas.

That proposed by Local Portsmouth, Ohio, first published in the Weekly Bulletin of June 15, demanding the resignation of J. M. Barnes as Campaign Manager, has been seconded by Locals Evansville, Ind.; Cook County, 6th and 9th Ward Branches, Ill.; Lamoni, Iowa; Kewaunee, Ill.; Clay Center, Kas.; West Plains, Mo.; Boswell, Okla.; Great Bend, Kas.; Cresco, Roff Branch, Okla.; Velva, N. D.; Kingman, Kas.; Steelton No. 1, Pa.; Harvey German Branch, Ill.; Thornton, Ill.; Garden City, Kas.; Rosedale, Kas.; Mountain Grove, Mo.; Jennings, La.; Alma, Neb.; East Las Vegas, N. M.; Piqua, O.; Lincoln, Kas.; Gooding, Ida.; Lockland, O. and Nickerson, Kas.

That proposed by Local Portsmouth, Ohio, first published in the Weekly Bulletin of June 15, demanding the resignation of J. M. Barnes as Campaign Manager, has been seconded by Locals Evansville, Ind.; Cook County, 6th and 9th Ward Branches, Ill.; Lamoni, Iowa; Kewaunee, Ill.; Clay Center, Kas.; West Plains, Mo.; Boswell, Okla.; Great Bend, Kas.; Cresco, Roff Branch, Okla.; Velva, N. D.; Kingman, Kas.; Steelton No. 1, Pa.; Harvey German Branch, Ill.; Thornton, Ill.; Garden City, Kas.; Rosedale, Kas.; Mountain Grove, Mo.; Jennings, La.; Alma, Neb.; East Las Vegas, N. M.; Piqua, O.; Lincoln, Kas.; Gooding, Ida.; Lockland, O. and Nickerson, Kas.

That proposed by Local Portsmouth, Ohio, first published in the Weekly Bulletin of June 15, demanding the resignation of J. M. Barnes as Campaign Manager, has been seconded by Locals Evansville, Ind.; Cook County, 6th and 9th Ward Branches, Ill.; Lamoni, Iowa; Kewaunee, Ill.; Clay Center, Kas.; West Plains, Mo.; Boswell, Okla.; Great Bend, Kas.; Cresco, Roff Branch, Okla.; Velva, N. D.; Kingman, Kas.; Steelton No. 1, Pa.; Harvey German Branch, Ill.; Thornton, Ill.; Garden City, Kas.; Rosedale, Kas.; Mountain Grove, Mo.; Jennings, La.; Alma, Neb.; East Las Vegas, N. M.; Piqua, O.; Lincoln, Kas.; Gooding, Ida.; Lockland, O. and Nickerson, Kas.

That proposed by Local Portsmouth, Ohio, first published in the Weekly Bulletin of June 15, demanding the resignation of J. M. Barnes as Campaign Manager, has been seconded by Locals Evansville, Ind.; Cook County, 6th and 9th Ward Branches, Ill.; Lamoni, Iowa; Kewaunee, Ill.; Clay Center, Kas.; West Plains, Mo.; Boswell, Okla.; Great Bend, Kas.; Cresco, Roff Branch, Okla.; Velva, N. D.; Kingman, Kas.; Steelton No. 1, Pa.; Harvey German Branch, Ill.; Thornton, Ill.; Garden City, Kas.; Rosedale, Kas.; Mountain Grove, Mo.; Jennings, La.; Alma, Neb.; East Las Vegas, N. M.; Piqua, O.; Lincoln, Kas.; Gooding, Ida.; Lockland, O. and Nickerson, Kas.

That proposed by Local Portsmouth, Ohio, first published in the Weekly Bulletin of June 15, demanding the resignation of J. M. Barnes as Campaign Manager, has been seconded by Locals Evansville, Ind.; Cook County, 6th and 9th Ward Branches, Ill.; Lamoni, Iowa; Kewaunee, Ill.; Clay Center, Kas.; West Plains, Mo.; Boswell, Okla.; Great Bend, Kas.; Cresco, Roff Branch, Okla.; Velva, N. D.; Kingman, Kas.; Steelton No. 1, Pa.; Harvey German Branch, Ill.; Thornton, Ill.; Garden City, Kas.; Rosedale, Kas.; Mountain Grove, Mo.; Jennings, La.; Alma, Neb.; East Las Vegas, N. M.; Piqua, O.; Lincoln, Kas.; Gooding, Ida.; Lockland, O. and Nickerson, Kas.

That proposed by Local Portsmouth, Ohio, first published in the Weekly Bulletin of June 15, demanding the resignation of J. M. Barnes as Campaign Manager, has been seconded by Locals Evansville, Ind.; Cook County, 6th and 9th Ward Branches, Ill.; Lamoni, Iowa; Kewaunee, Ill.; Clay Center, Kas.; West Plains, Mo.; Boswell, Okla.; Great Bend, Kas.; Cresco, Roff Branch, Okla.; Velva, N. D.; Kingman, Kas.; Steelton No. 1, Pa.; Harvey German Branch, Ill.; Thornton, Ill.; Garden City, Kas.; Rosedale, Kas.; Mountain Grove, Mo.; Jennings, La.; Alma, Neb.; East Las Vegas, N. M.; Piqua, O.; Lincoln, Kas.; Gooding, Ida.; Lockland, O. and Nickerson, Kas.

That proposed by Local Portsmouth, Ohio, first published in the Weekly Bulletin of June 15, demanding the resignation of J. M. Barnes as Campaign Manager, has been seconded by Locals Evansville, Ind.; Cook County, 6th and 9th Ward Branches, Ill.; Lamoni, Iowa; Kewaunee, Ill.; Clay Center, Kas.; West Plains, Mo.; Boswell, Okla.; Great Bend, Kas.; Cresco, Roff Branch, Okla.; Velva, N. D.; Kingman, Kas.; Steelton No. 1, Pa.; Harvey German Branch, Ill.; Thornton, Ill.; Garden City, Kas.; Rosedale, Kas.; Mountain Grove, Mo.; Jennings, La.; Alma, Neb.; East Las Vegas, N. M.; Piqua, O.; Lincoln, Kas.; Gooding, Ida.; Lockland, O. and Nickerson, Kas.

June 13. Membership represented by seconds, 1,097.

That of Local El Cajon, Cal., published April 27, relating to printing occupations of candidates for party nominations on ballots, expired June 27. Membership represented by seconds, 321.

National Notes

During the month of May, 1911, the national office received for literature the sum of \$554.79. During the same month in 1912 the amount received for literature was \$1,076.07.

During the first five months of 1911 the receipts for literature were \$1,842.79. In the same period in 1912 the literature receipts were \$5,999.59.

The average membership for the first five months of 1912, as indicated by the dues received, was 122,589.

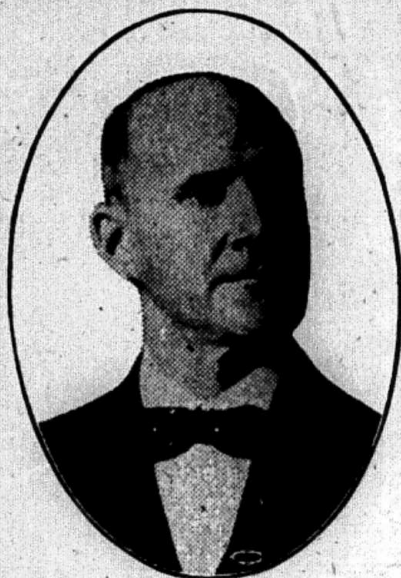
State Secretary Schawe of Ohio reports as follows:

"This is to notify you that John

CAMPAIGN SUPPLIES

Action by Campaign Committee

"MOTION: THAT CAMPAIGN MANAGER BARNES BE INSTRUCTED TO CIRCULARIZE THE MEMBERSHIP, INFORMING THEM THAT A LARGE VARIETY OF CAMPAIGN MATERIAL IS TO BE GOTTEN OUT AND SOLD BY THE CAMPAIGN COMMITTEE, AND REQUESTING THEM NOT TO PATRONIZE PRIVATE COMPANIES FURNISHING SUCH SUPPLIES, BUT TO WITHHOLD THEIR ORDERS FOR SAME UNTIL THEY CAN BE SUPPLIED BY THE CAMPAIGN COMMITTEE, IN ORDER THAT SUCH PROFITS AS MAY ACCRUE THEREFROM SHALL GO INTO THE CAMPAIGN FUND OF THE SOCIALIST PARTY RATHER THAN INTO THE POCKETS OF PRIVATE MANUFACTURERS. ADOPTED."



DEBS.



SEIDEL.

ELECTROTYPE CUT.

Size, one-half newspaper column..... \$0.30 each
One-column size, same as above..... .50 each
Two-column size80 each
Big cut, size 1 1/2 in. by 9 1/2 in..... 3.00 each
In ordering mention "fine" or "coarse" screen—fine for good paper, coarse for newspaper, or cheap paper. Mats., any size above stated, 10 cents each.

Debs buttons, 5 cents each; in lots of ten or more \$ 0.01 each
Stereopticon slides, with Debs and Seidel pictures25 each
Steel Engravings, Debs or Seidel, for framing, 1 1/2 x 9 1/2 inches05 each
Debs or Seidel autographed photo..... .25 each
Campaign drinking cups (sanitary and indestructible), 10c each; lots of 100. 8.00
Watch fob, silver oxidized, Britannia metal-embossed picture of candidates.. .25 each
Neckties, four-in-hand, with Debs and Seidel pictures25 each
Socialist Pennants, a triangular red felt flag, 11 inches wide, 26 inches long, with party emblem with words "Socialism," with "Let the Nation Own the Trusts"25 each
Per hundred 17.00

Cash must accompany all orders. Make remittance to

J. MAHLON BARNES, Campaign Manager.
No. 111 No. Market St., Chicago, Ill.

A great number of articles and novelties to be handled by the Committee are now being collected. In a few weeks a catalogue will be issued to all locals and all who apply.

Minutes of the National Campaign Committee

SESSION OF MONDAY, JUNE 17, 1912

Meeting was called to order at eleven o'clock by Campaign Manager Barnes, with Comrades Branstetter, Simons and Thompson present. Comrade Thompson was elected chairman.

Comrade Barnes reviewed the subjects presented by him to the joint sessions of the National Campaign Committee and National Executive Committee, asking for consideration in detail on such as had not been previously acted upon, as follows:

- 1. Dates for Comrades Debs and Seidel.
2. Moving pictures and slides.
3. A corps of national speakers.
4. Special agitation in the six states where woman suffrage is an issue.
5. The systematic distribution of literature.
6. The consideration of favorable congressional districts.
7. Literature distribution to labor organizations and agitation therein.
8. The setting of a special day for special meetings by every local organization.
9. Finances—One Day Wage Fund, and the report of the Committee on Ways and Means to the National convention.
10. Cartoons and news service.
11. One sheet poster lithographs.
12. Campaign supplies.
13. Popular letter writing—endless chain.
14. Campaign Book.

Under the head of speakers, Comrade Barnes presented a list of comrades who had applied for positions as speakers during the campaign.

The committee discussed the speakers best suited to the campaign and instructed Comrade Barnes to correspond with them and ascertain the time they would be available for work prior to election day.

Motion: That the Campaign Manager be requested to write to the Woman's National Committee, asking for suggestions of methods to be used during the campaign. Adopted.

Motion: That the Committee on Campaign Book be asked to report on the Campaign Book at the next meeting of the Campaign Committee. Adopted.

Comrade Thompson reported as to the two favorable districts, the 4th and 5th., of Wisconsin.

Comrade Simons reported as to the favorable chances of carrying the 3d

district of Kansas.

Comrade Debs arrived. He also reported favorably on the 3d district of Kansas.

The question of work to be done in the favorable districts in all states was thoroughly discussed in connection with reports on same from a number of state secretaries.

Motion: That the Campaign Manager be directed to communicate with all State Secretaries and obtain from each a report in reference to the congressional districts in which there is a possibility of election, showing the vote in the national elections of 1908 and 1910, the number of active locals and members, and the reasons for believing that such district can be carried for Socialism. Adopted.

The question of finances was taken up and discussed, in connection with the report of the Committee on Ways and Means.

Comrade Debs stated that a fund of \$500,000 must be raised and offered a number of suggestions for the same. Adjourned at 12:15 to meet at 1:30.

Afternoon Session.

The committee convened at 1:30, and the discussion of ways and means for securing a campaign fund was resumed.

The following method was adopted: (1) One Day Wage Fund, (2) Voluntary subscription lists for general circulation, (3) Voluntary assessment stamps, (4) Final Call, and such other measures, including the sale of buttons, autographed photographs, booster badges, drinking cups, neckties, and the like, as seem practicable.

Motion: That Comrade Barnes be instructed to circularize the membership, informing them that a large variety of campaign material as above specified is to be gotten out and sold by the Campaign Committee, and requesting them not to patronize private companies furnishing such supplies, but to withhold their orders for same until they can be supplied by the Campaign Committee, in order that such profits as may accrue therefrom shall go into the campaign fund of the Socialist Party rather than into the pockets of private manufacturers. Adopted.

Motion: That Comrade Debs be requested to select two companions and a stenographer, and that the Campaign Committee provide a publicity

man to accompany Comrade Debs on his speaking tour. Adopted.

Motion: That Comrade Barnes be instructed to secure such publicity man. Adopted.

Comrade Debs reported regarding the extraordinary demands upon his time for magazine articles and the like, and the fact that the mail addressed to his office made the services of a stenographer necessary.

Motion: That Comrade Debs be sent a check for \$25.00 each week for expenses. Adopted.

Comrade Debs waived wages for his services until such time as he was to be actually engaged at speaking for the campaign.

Motion: That Comrade Seidel be authorized to secure a traveling companion and a stenographer. Adopted.

Comrade Barnes read communications relating to the use of stereopticons and slides and the advisability of employing them in the larger cities, as submitted by Comrade S. Liberty, of New York City.

Comrade Simons made a report on moving pictures as outlined by Dr. Sonnantine of Girard.

Motion: That Comrade Sonnantine be asked to come to Chicago to confer with the committee on the subject of moving pictures, at the expense of the committee. Adopted.

Motion: That the compensation for the campaign speakers shall be \$5.00 per day and expenses, the expenses to include railroad fare and, as an average, not more than \$3.00 per day for hotels and incidentals. Adopted.

Motion: That the Campaign Manager be authorized to secure lithographs in hundred thousand lots on terms quoted to the committee, same to be sold at cost. Adopted.

Motion: That the Campaign Committee hold its next meeting Sunday, July 7, beginning at 10 a. m. Adopted. Adjourned at 4 p. m.

MABEL H. HUDSON, Secretary.

As previously reported, there was a long delay in the secretary's revised minutes of the national convention reaching the National office, and therefore the ballot for Referendum B was made up from the stenographic report. It now appears that the stenographic report and the secretary's minutes differ in one particular. In Article X, Section 9, the last line, the stenographic report has the expression "one year." The secretary's minutes have it "two years."

Unless objection is made by as many locals as are required to initiate a referendum, the vote on this section will be interpreted as being for or against two years.

National Socialist Campaign Committee

Financial Report from May 21 to June 30, 1912

Receipts table with columns for item and amount. Total Receipts: \$1,979.19

Expenditures table with columns for item and amount. Total Expenditures: \$1,556.64

Wages table with columns for name and amount. Total: \$718.85

Campaign Committee meeting table with columns for name and amount. Total: \$150.15

Assets table with columns for item and amount. Total: \$947.67

Liabilities table with columns for item and amount. Total: \$882.09

Assets table with columns for item and amount. Total: \$947.67

Liabilities table with columns for item and amount. Total: \$882.09

Fraternally submitted, O. F. BRANSTETTER, Treasurer Campaign Committee.

Campaign Fund.

Large table listing campaign fund contributions by month (May and June) and localities, with columns for date, name, and amount.

Large table listing campaign fund contributions by localities, with columns for locality and amount.

12-Bohemian Br., Wilmerding, Pa.	1.00	13-S. S. Osasto, Milford, N.H.	5.00	15-ton, S. C.	1.00	17-Local Petatuma, Cal.	1.00	20-Local Albany, N. Y.	2.00
12-W. S. Stull, Quincy, Pa.	1.00	14-Deutsche Br., Richmond, Va.	1.00	15-Local Hamilton, Ohio	1.00	17-Local Freewater, Ore.	1.00	20-Local No. 19, East Hartford, Conn.	1.05
12-C. C. Brown, Canal Dover, Ohio	1.00	14-Local Columbus, Ohio	1.00	15-Local Littlefork, Minn.	2.00	17-Local Stockton, Cal.	1.00	20-English Br. Staunton, Ill.	2.00
12-Local Eau Gallie, Fla.	1.00	14-Local The Dalles, Ore.	2.00	15-Local Zanesville, Ohio	1.00	17-John Lyons, Jerome, Ariz.	1.00	20-Local No. 24 New London, Conn.	1.55
12-Local Jacksonville, Fla.	1.00	14-Finnish Br., De Kalb, Ill.	1.00	15-Local Salt Lake City, Utah	1.00	17-S. J. Ballard, Jerome, Ariz.	2.00	20-J. V. Kolachny, Fort Cobb, Okla.	1.00
12-Local Dexter, Mo.	1.00	14-Local Sunny Point, Grimes, Okla.	1.00	15-Local Irondale, Wash.	1.80	17-F. F. Shea, Jerome, Ariz.	1.00	20-Local Wilmington, Del.	3.00
12-Local Herrin, Ill.	1.00	14-Local Velma, Arthur, Okla.	1.00	15-W. W. Ethridge, Center, Okla.	1.00	17-Otto Olson, Jerome, Ariz.	.50	20-Local Greenfield, Mass.	2.00
12-Local Colorado City, Colo.	1.00	14-Local St. John, Kan.	1.00	15-S. S. Osasto, Springfield, Mass.	3.00	17-Jay Miller, Jerome, Ariz.	1.00	20-C. C. Swan, Kewanee, Ill.	1.00
12-Local Urbana, Ohio	1.00	14-Finnish Local No. 2, Aberdeen, Wash.	5.00	15-Local Albuquerque, N. M.	1.00	17-Wm. Hughes, Dillonvale, Ohio	1.00	20-Local Manchester, N. H.	1.00
12-Local Denning, Ark.	1.00	14-Local Yarmouth, Me.	2.00	15-Polish Br. Pittsburg, Pa.	1.00	17-Local Bannock Minn.	1.00	20-Local Edna, Formfelt, Mo.	1.00
12-Local Marquette, Mich.	3.00	14-Local Dolgeville, N. Y.	2.00	15-Polish Br. Cherry Valley, Pa.	1.00	17-E. Edson, Lynden, Wash.	5.00	20-Local Bisbee, Ariz.	1.00
12-Local Omaha, Neb.	1.00	14-Local Wauseon, Ohio	5.00	15-Polish Br. 15th Ward Chicago, Ill.	1.00	17-Finnish Soc. Br. 7th Ward, Jersey City, N. J.	5.00	20-Local Oak Hill, Ill.	1.25
12-Local Vinita, Okla.	1.00	14-Local Weir, Kan.	1.00	15-Ridley Bell, Mulberry, Kan.	1.00	17-Local Coal City, Ala.	1.00	20-Local Pine, Idaho	1.00
12-Polish Local Grand Rapids, Mich.	1.00	14-Local Kirksville, Mo.	1.00	15-Local Tidionte, Pa.	1.00	17-Local Fraser, Ida.	1.00	20-Local Greensboro, N. C.	1.00
12-Local Sunbury, Pa.	2.00	14-Local Bronson, Kan.	1.00	15-P. J. Thwaites, Humboldt, Kan.	1.00	17-Local Canton, Ohio	1.00	20-Local Haven, Pa.	1.00
12-Local No. 1284, Nocona, Texas	1.00	14-A. V. Wright, Keysville, Fla.	1.00	15-D. M. Sachter, Sheffield, Pa.	1.00	17-Local Tacoma, Wash.	1.00	20-Finnish Local Hanna, Wy.	10.00
12-Local Hartland, Vt.	1.00	14-Local Lyman, Wash.	1.00	15-Local Holland, Mich.	1.00	17-Local Danbury, Conn.	1.00	21-Local Edgeley, N. D.	2.00
12-Local Harrisburg, Ill.	2.00	14-Local Pomeroy, Ohio	1.00	15-Local Fayette, Utah	1.00	17-Br. Virden, Ill.	1.00	21-Local Kennewick, Wash.	1.00
12-Finnish Local Leadville, Colo.	2.00	14-Local Martinsburg, W. Va.	1.00	15-S. Miller, Alameda, Cal.	1.00	17-Br. Morrystown, N. J.	1.00	21-Local Foothills, Lignite, N. D.	1.00
12-Local Pibel, Neb.	1.00	14-Local Ogden, Utah	1.00	15-Branch Highspire, Pa.	1.00	17-Local St. Anthony, Ida.	5.00	21-Local Bismark, Tacoma, Wash.	1.00
12-C. W. Edwards, Maquoketa, Ia.	1.00	14-Local Bristol, Conn.	1.00	15-Branch Corry, Pa.	1.00	17-Local Gold Hill, Ore.	1.00	21-Local Bay City, Mich.	1.00
12-Local Tyler, Texas	1.50	14-B. R. Brainard, Graham, Cal.	1.00	15-Local Six Mile Run, Pa.	2.50	17-Local Coquille, Ore.	1.00	21-Local Nyack, N. Y.	1.00
12-J. W. Mosely Sumas, Wash.	1.00	14-Local San Pedro, Cal.	1.00	15-Finnish Local Marquette, Mich.	1.00	17-Local North Bend, Ore.	2.50	21-Local Dayton, Wash.	2.00
12-Local Spokane, Wash.	1.00	14-Local Underwood, N. D.	1.00	15-4th Ward Local Spokane, Wash.	1.00	17-Local Roseburg, Ore.	2.25	21-Local Bryn Mawr, Wash.	1.00
12-Local Minneapolis, Minn.	3.50	14-Jean Haskins, Leavenworth, Wash.	1.00	15-Local Rialto, Cal.	1.00	17-Branch Warren, Pa.	1.00	21-Local Deer Island, Ore.	1.00
13-Local S. Portsmouth, Ky.	1.00	14-G. H. Olmstedt, Kenmar, N. D.	1.00	15-Branch Turlock, Cal.	1.00	17-Finish Local Duluth, Minn.	2.00	21-Local Maysville, Okla.	.50
13-Local Findlay, Ohio	1.00	14-Boston Soc. Club, Boston, Mass.	1.00	15-Jos. Blixt, Gunnison City, Utah	1.25	17-Local Canal Dover, Ohio	1.00	21-German Br. Staunton, Ill.	5.00
13-Local No. 881, Houston, Texas	2.00	14-Local Philipsburg, Mont.	1.00	15-Local Brunswick, Md.	1.25	17-Local Hot Springs, S. D.	1.00	21-Local Massillon, Ohio	1.00
13-Local Alexandria, La.	1.00	14-Local Sweetwater, Tex.	1.00	15-Local Eureka Spring, Ark.	1.00	17-Local Bandon, Ore.	1.20	21-Local Spring Hill, Hope, Ark.	1.00
13-Local Rival Portal, N. D.	1.00	14-Local Mason City, Neb.	1.00	15-Central City Com., Kalamazoo, Mich.	1.00	17-Geo. W. Robb, Tonopah, Nevada	1.00	21-5th Ward, Precinct A Br., St. Joseph, Mo.	2.00
13-Finnish Workingman's Association, Maynard, Mass.	5.00	14-Local Hollister, Ohio	1.00	15-Local Bellefontaine, Ohio	1.00	17-Local Gibbonsville, Ida.	2.00	21-Local Puyallup, Wash.	1.00
13-Local Elkhart, Ind.	1.00	14-Local Watertown, Mass.	1.00	15-Local Santa Barbara, Cal.	1.00	17-Local McGuffey, Ohio	1.00	21-Br. Kenosha, Wis.	1.00
13-Local Cass Lake, Minn.	1.00	14-Local Harris, Minn.	1.00	15-A. E. Pellerin, Dennison, Texas	1.00	17-Local Astoria Long Island City, N. Y.	1.00	21-Local Frostproof, Fla.	1.00
13-Local So. Franklin, Ark.	1.00	14-R. H. Quinn, Cross Plains, Texas	1.00	15-Local Ocean, Cal.	1.00	17-Local Canton, Ill.	1.00	21-Longwood Br. Boston Soc. Club, Mass.	2.00
13-Local Corpus Christi, Tex.	1.00	14-Br. 7, Local New York, N. Y.	1.00	15-Local Hollister, Cal.	2.00	17-Branch Aurora, Ill.	1.00	21-Local Albany, Ore.	1.00
13-Local Coshocton, Ohio	1.00	14-Finnish Br. Ashtabula Harbor, Ohio	1.00	15-Local Marion Co., Indianapolis, Ind.	1.00	17-Local Hamilton, Wash.	1.00	21-Br. 9, Local New York, N. Y.	1.00
13-Local Johnstown, Pa.	1.00	14-Local Mora, Minn.	1.00	15-Local Merrill, Ore.	1.00	17-Local Avis, N. Mex.	1.00	21-Local No. 45, Plymouth, Conn.	1.00
13-Local Proctor, Vt.	5.00	14-Local So. Bellingham, Wash.	1.00	15-Local Hancock, Md.	1.00	17-Local Rockville, Conn.	1.00	21-G. R. Emmerling, Friday Harbor, Wash.	1.00
13-Local Oakdale, Mobile, Ala.	1.00	14-Local Woodward, Ia.	1.00	15-Local Meridian, Wash.	1.00	17-Br. 2, Providence R. I.	2.50	21-Local Republic, Wash.	1.00
13-Soc. Part. St. Louis, Mo.	5.00	14-Walter Whittle, Woodward, Ia.	1.00	15-Local Benston, Wash.	2.20	17-Br. 4, Portland, Ore.	4.00	21-Br. Minersville, Pa.	1.00
13-Local Murphysboro, Ill.	1.00	14-W. H. Aggus, Norwalk, O.	1.00	15-No. 48 S. S. F., Calumet, Mich.	1.00	17-Local Bristol, Pa.	1.00	21-Br. Ardmore, Pa.	1.00
13-Local Troy, N. Y.	1.00	14-Local Wilmington, Ohio	1.00	15-C. W. Campbell, Sellersville, Ala.	1.00	17-Local Loman, Minn.	1.00	22-Soc. Slavic Branch No. 9, Milwaukee, Wis.	1.00
13-Local Missoula, Mont.	1.00	14-Local Larmier, Pa.	2.25	15-Local La Center, Wash.	1.00	17-Col. by F. I. Rudy, Rocky Mount, N. C.	2.25	22-Local Warroad, Minn.	2.00
13-Local Neff, Ohio	1.00	14-Local Lawrence Co., Newcastle, Pa.	2.00	15-Branch Danville, Ill.	1.00	17-Local Elmwood Pl., Ohio	1.00	22-Br. No. 1, Milwaukee, Wis.	1.00
13-Local Louisville, Colo.	1.00	14-Polish Br. Cleveland, O.	2.00	15-Local Santa Rosa, Cal.	5.00	18-Local Niles, Ohio	1.00	22-Br. 11, 23d A. D. Local Kings County, Brooklyn, N. Y.	1.00
13-Local Minot, N. D.	1.00	14-Local Littleton, Colo.	1.00	15-Local Waterbury, Conn.	3.00	18-Local Wadsworth, Ohio	1.00	22-Local Columbus, Ind.	1.00
13-Jim Welsh, Whitney, Tex.	.10	14-Local Thomson, Minn.	1.00	15-Branch Haledon, N. J.	1.00	18-Branch Elgin, Ill.	1.00	22-Local Dickinson County, Abilene, Kan.	1.00
13-German Br., Providence R. I.	10.00	14-Local Yonkers, N. Y.	1.00	15-Local Johnston, N. Y.	1.00	18-J. E. Hartwell, Troy, Mont.	1.00	22-Local Chariton, Ia.	1.00
13-Local Battle Creek, Mich.	2.64	14-Local Aberdeen, S. D.	1.00	15-Local Bazette Kerens, Texas	1.00	18-Br. West Brownsville, Pa.	1.00	22-Local Lanoni, Ia.	1.00
13-Local Mankato, Minn.	1.00	14-Local Rockwood, Tenn.	1.00	15-Br. East Moline, Ill.	1.00	18-Local Hay Lake, Carlton Co., Minn.	1.00	22-J. G. Brennan, Sparks, Nev.	1.00
13-Col. by G. K. Wangness, Willmar, Minn.	2.45	14-A. H. Ferguson, Wildrose, N. D.	1.00	15-Local O'Fallon, Ill.	1.00	18-Frank E. Fry, Utahville, Pa.	1.00	22-W. R. Goldsmith, Big Pine, Cal.	1.00
13-C. T. Dover, Sequine, Wash.	1.00	14-2nd Ward Br. Denver, Colo.	1.00	15-Local Middletown, N. Y.	1.00	18-Local Anderson, Cal.	1.50	22-Alex Boggio, Big Pine, Cal.	1.00
13-Local Colorado Springs, Colo.	1.00	14-G. G. Wiggins, Denver, Colo.	.50	15-Local Laidlaw, Ore.	1.00	18-Br. 3, Local Hymera, Ind.	1.00	22-D. D. Richie, Big Pine, Cal.	1.00
13-Lakeside Local, Somers, Mont.	1.00	14-Local Shelbyville, Ind.	1.00	15-Local Buckley, Wash.	1.00	18-Local Winterset, Ia.	1.00	22-J. J. Ross, Big Pine, Cal.	.50
13-Finnish Local, Chassell, Mich.	1.00	14-Local Cherryvale, Kan.	2.00	15-Local Ellendale, N. D.	1.00	18-Local Tooele, Utah	1.00	22-Eli Peterich, Big Pine, Cal.	.50
13-Local Lockman, Ia.	1.00	14-Local Ballston Spa, N. Y.	1.00	15-Branch Tampa, Fla.	1.00	18-A. E. Sawyer, Sac City, Ia.	1.00	22-Geo. Peterich, Big Pine, Cal.	.50
13-W. A. Schwan, Wyandotte, Mich.	1.00	14-Local Ellendale, N. D.	1.00	15-Local E. Hampton, Conn.	2.00	18-Local Watervliet, N. Y.	1.00	22-Mike Saban, Big Pine, Cal.	.50
13-Local Oak Grove, Logan-sport, La.	1.15	14-Local Lawrence Co., Newcastle, Pa.	2.00	15-Local Canton and Highlandtown, Md.	1.00	18-Local Worthington, Minn.	4.35	22-A. A. Richie, Big Pine, Cal.	1.00
13-Local Jackson, Mich.	1.00	14-Polish Br. Cleveland, O.	2.00	15-Swedish Br. W. Concord, N. H.	3.00	18-Local Mason City, Ia.	1.00	22-W. A. Nysuonger, Big Pine, Cal.	1.00
13-Local Central Washington, D. C.	2.00	14-Local Littleton, Colo.	1.00	15-Charles Memberson, Malden, Mass.	1.00	18-Local Ivorton, Conn.	1.00	22-Pine, Cal.	1.00
13-Local Ottumwa, Ia.	1.00	14-Local Thomson, Minn.	1.00	15-Local Watertown, N. Y.	1.00	18-Local Fullerton, Cal.	1.00	22-Alex Boggio, Big Pine, Cal.	1.00
13-Robert Kerr, New Waterford, Ohio	1.00	14-Local Yonkers, N. Y.	1.00	15-Col. by A. Millard, Gouverneur, N. Y.	1.00	18-Branch Oakland, Topeka, Kan.	1.00	22-D. D. Richie, Big Pine, Cal.	1.00
13-Col. by D. J. O'Mahoney, Pocatello, Ida.	1.00	14-Local Aberdeen, S. D.	1.00	15-Local American Local Frontenac, Kan.	1.00	18-Local York, Neb.	1.00	22-J. J. Ross, Big Pine, Cal.	.50
13-Local Logan, Utah	1.00	14-Local Rockwood, Tenn.	1.00	15-Local Rush Nekoma, Kan.	2.00	18-Branch Juniata, Pa.	3.00	22-Eli Peterich, Big Pine, Cal.	.50
13-Local Centre Grove, Humboldt, Kan.	1.00	14-A. H. Ferguson, Wildrose, N. D.	1.00	15-Local Derwent, Ohio	1.00	18-Local Winnebago Co., Rockford, Ill.	1.00	22-Geo. Peterich, Big Pine, Cal.	.50
13-3rd Cong. Dist., Girard, Kan.	2.00	14-Isaac Peterson, Chicago, Ill.	1.00	15-Campaign Com., Philadelphia, Pa.	4.00	18-Br. Phoenixville, Pa.	1.00	22-Mike Saban, Big Pine, Cal.	.50
13-Local Swanlake, Eakly, Okla.	1.00	14-Finnish Local Cloquet, Minn.	2.00	15-Local Philadelphia, Pa.	1.00	18-Br. 13, Local Shelton, Conn.	1.00	22-A. A. Richie, Big Pine, Cal.	1.00
13-Local Monett, Mo.	1.10	14-Rudolph Bleistein, Kansas City, Mo.	1.00	15-J. Foster Nichols, Franklin, N. H.	1.00	18-Local Iowa City, Ia.	1.00	22-W. A. Nysuonger, Big Pine, Cal.	1.00
13-13th Ward Br., Columbus, Ohio	1.00	14-Local Bucyrus, Ohio	1.00	15-Finnish Br. 2, Astoria, Ore.	15.00	18-Local Ethel, Wash.	1.00	22-Pine, Cal.	1.00
13-Local Napoleon, Ohio	1.00	14-Local South Bend, Ga.	1.00	15-C. S. Baker, Denver, Colo.	1.00	18-Br. Williamsbridge, Wakefield, N. Y.	1.00	22-Branch Lafayette, Colo.	3.10
13-Local Muncie, Ind.	1.00	14-R. A. Flanagan, South Bend, Ga.	1.00	15-Local Charter Oak Battleground, Wash.	1.75	18-Local Carthage, Mo.	1.00	22-Local No. 1334, Aransas Pass, Texas	1.00
13-Local Austin, Texas	1.00	14-Local 18 Br. San Antonio, Texas	2.35	15-Local Jamestown, N. Y.	1.00	18-Lewis Smith, Abingdon, Ill.	1.00	22-Local Greensboro, Pa.	1.00
13-Polish Br. P. A. Buffalo, N. Y.	1.00	14-Br. Ephrata, Pa.	1.00	15-Local Orrville, Wash.	1.50	18-Br. Phoenixville, Pa.	1.00	22-Local Bigstone City, S. D.	1.00
13-Walter Weiz, Belleville, Ill.	1.00	14-Br. Pomona Local Los Angeles Co., Cal.	2.00	15-Local Marshfield, Ore.	1.30	18-Br. 13, Local Shelton, Conn.	1.00	22-Local Reno, Nevada	1.00
13-Local Titusville, Pa.	1.00	14-Br. Latrobe, Pa.	2.00	15-Local Sansom, Texas	1.00	18-Local Fullerton, Cal.	1.00	22-Local Riggins Nampa, Idaho	1.00
13-Anna Taylor Netterfield, St. Louis, Mo.	1.00	14-Skandinavian Soc. Club, Duluth, Minn.	1.00	15-Local East Auburn, Cal.	1.00	18-Local York, Neb.	1.00	24-Local No. 1, Atlantic City, N. J.	1.00
13-Local Suerdrup, Underwood, Minn.	1.00	14-W. W. Piercy, Princeton, Ky.	1.35	15-Local Elkins, W. Va.	1.50	18-Local Clarksburg, W. Va.	2.00	24-Thos. M. Taylor, Atlanta, Georgia	1.00
13-Local Detroit, Mich.	1.00	14-Local Anacortes, Wash.	1.00	15-Local Winnemucca, Nev.	1.00	19-German Br. Holyoke, Mass.	5.00	24-Alex S. Lipsins, Atlanta, Georgia	1.00
13-Br. Reynoldsville, Rathmel, Pa.	1.00	14-Local Dover, N. J.	1.00	15-Col. by Jas. G. Tait, Dunsmuir, Cal.	1.00	19-Local Flandreau, S. D.	2.50	24-Local Jacksonville, Ind.	1.00
13-Local Marshalltown, Ia.	1.00	14-Br. No. 2 Pawtucket, R.I.	2.00	15-S. S. Osasto Jousi, Hancock, Mich.	5.00	19-Local Gibsonburg, Ohio	1.00	24-Br. No. 1, Sheboygan Falls, Wis.	1.00
13-Local Bureau, Ill.	1.00	14-Local New Rochelle, N. Y.	1.00	15-Branch Spring City, Pa.	1.00	19-Local Baltimore, Md.	1.45	24-1st Ward Branch Hammond, Ind.	1.00
13-Local Magdalena, N. M.	1.00	14-Local Lebanon, Ore.	1.00	15-Local Monitor, Wash.	1.00	19-Local Carthage, Mo.	1.00	24-Local Oakland, Ark.	.50
13-Local Gargerman, N. M.	1.00	14-Local Buena Park, Cal.	1.00	15-Local East Auburn, Cal.	1.00	19-Lewis Smith, Abingdon, Ill.	1.00	24-Local New Albany, Pa.	.14
13-Local Lamar, Mo.	1.15	14-Local Bridgeport, Conn.	1.00	15-Local Elkins, W. Va.	1.50	19-Ben Smith, Ladd, Ill.	1.00	24-Local Price, Utah	1.00
13-Local Las Animas, Trinidad, Colo.	1.00	14-Local Middletown, Conn.	1.00	15-Local Winnemucca, Nev.	1.00	19-B. M. Reed, Peru, Ind.	1.00	24-Local Grand Junction, Col.	1.00
13-Local Canon City, Colo.	1.25	14-Local Redlands, Cal.	1.00	15-Col. by Jas. G. Tait, Dunsmuir, Cal.	1.00	19-Frank Shaak, Sellersville, Pa.	1.00	24-E. P. Ware, Eureka, Kan.	2.00
13-Chas. Seith, Rawlins, Wyo.	1.00	14-Local Wrenshall, Minn.	1.00	15-S. S. Osasto Jousi, Hancock, Mich.	5.00	19-Jos. B. Allen, Bryn Mawr, Pa.	1.00	24-Local Anderson, Ind.	1.00
13-Local McBrides, Mich.	1.00	14-Local Graniteville, Vt.	1.00	15-Branch Spring City, Pa.	1.00	19-5th Ward Local, Seattle, Wash.	1.00	24-R. G. Kirsch, Bear Lake, Mich.	1.00
13-Local Cedar, Hinton, Okla.	1.00	14-Local Flint, Mich.	1.00	15-Local Monitor, Wash.	1.00	19-Collected by F. W. Longmier, Ashford, Wash.	1.00	24-Local Woodstock, Vermont	2.75
13-Moses Derricott, Mahoney City Pa.	1.00	14-Local Ray, Ariz.							

Table listing local branches of the Socialist Party across various states, including addresses and membership numbers.

(To be continued)

Table listing National Executive Committee members, International Secretaries, and National Secretaries.

Table listing National Translator-Secretaries for various languages and regions.

SOCIALIST PAPERS

Table listing Socialist papers, categorized by Daily (English), Weekly (English), Monthly (English), Daily (Foreign), Weekly (Foreign), and Monthly (Foreign).

Table listing Monthly (English) papers, including International Socialist Review and others.

Table listing Daily (Foreign) papers, such as German-Chicagoer Arbeiter Zeitung and others.

Table listing Weekly (Foreign) papers, including German-Arbeiter Zeitung and others.

Table listing Monthly (Foreign) papers, such as Finnish-Sakenia.

Table listing the Woman's National Committee members and their addresses.

General Correspondent, Woman's National Committee: Caroline A. Lowe.

Table listing State Correspondents for various states, including names and addresses.

National Committeemen

Table listing National Committeemen for each state, including names and addresses.

State Secretaries

Table listing State Secretaries for each state, including names and addresses.